

# ***THE Birches***

**A NEWSLETTER FOR KINGTHORN,  
MUCH BIRCH, LITTLE BIRCH & ACONBURY**

*First published 1977* **September 2018**

## **Kingsthorne and Little Birch Gardening Club**

### **ANNUAL OPEN HORTICULTURAL SHOW**

LITTLE BIRCH VILLAGE HALL

**Saturday September 1st 2018**

#### **Programme of events**



- ♦ 9.00 am - Hall open to exhibitors only.
- ♦ 10.45 am - Last entries accepted.
- ♦ 11.00 am - Hall closed to the public.
- ♦ Judging of exhibits.
- ♦ 2.00 pm - Hall opens to the public.
- ♦ 3.30 pm - Presentation of Trophies and Raffle Draw.
- ♦ 4.00 pm - Sale of Produce by auction

**Be sure to stay for the sale of home grown vegetables, fruit,  
flowers, home-made cakes and preserves!**

**Don't miss out on some truly scrumptious produce.**

**Children's workshop 31<sup>st</sup> August 2018**

## **Diary Dates**

### **September 2018**

- |                 |                                       |
|-----------------|---------------------------------------|
| <b>1st</b>      | <b>Annual Horticultural Show LBVH</b> |
| <b>2nd</b>      | <b>Parish Bird Walk 9am LBVH</b>      |
| <b>3rd</b>      | <b>Longtown Historial Society</b>     |
| <b>6th</b>      | <b>Coffee Morning LBVH</b>            |
| <b>8th-16th</b> | <b>Art Exhibition Kilpeck VH</b>      |
| <b>14th</b>     | <b>Concert at the Steiner Academy</b> |
| <b>18th</b>     | <b>WI Open Group Meeting MBCH</b>     |
| <b>21st</b>     | <b>Pudding Evening MBCH</b>           |
| <b>28th</b>     | <b>Village Market MBCH</b>            |

### **October 2018**

- |             |                            |
|-------------|----------------------------|
| <b>4th</b>  | <b>"Artspace" LBVH</b>     |
| <b>26th</b> | <b>Village Market MBCH</b> |

## **Church Services September 2018**



### **September 2nd (14th Sunday after Trinity)**

11.00 a.m. Little Birch CW Communion

### **September 9th (15th Sunday after Trinity)**

9.15 a.m. Much Birch Family Communion  
11.00 a.m. Little Birch Morning Worship

### **September 16th (16th Sunday after Trinity)**

9.15 a.m. Much Birch CW Communion  
11.00 a.m. Little Birch BCP Communion

### **September 23rd (17th Sunday after Trinity)**

9.15 a.m. Much Birch Morning Worship

### **September 30th (18th Sunday after Trinity)**

10.30 a.m. Much Birch Group Service with  
Archdeacon Derek (new Archdeacon of  
Hereford)

## **Much Birch WI**

Much Birch WI meets on the third Tuesday of each month in Much Birch Community Hall, just off the A49. The Hall is next door to the surgery and both are signed from the road.

Our next meeting will be on 18th September at 7.30pm and features a talk "The Harrow and the Plough" by Robin Thorndyke covering the works of well known Herefordshire artist Brian Hatton. Refreshments will be provided.

This is a group meeting and visitors are most welcome.

Please contact Sallie on 01432  
340069  
for further details.

**theWI**  
INSPIRING WOMEN

## Little Birch Village Hall Committee

### Newsletter notices for September 2018

#### Coffee Morning

The next coffee morning will be on **Thursday 6<sup>th</sup> September 10:30am - 12:30pm** at **Little Birch Village Hall**.

Join us and enjoy a cup of tea or coffee, some cake or a biscuit. Make new friends or catch up with old friends, have a chat and find out more about the local community and let us know your thoughts and suggestions as to how we can develop these regular meetings.

If you need help with transport please contact Margaret: 01981 540374

#### Whist Drive

We guarantee a warm welcome and a fun evening with good company at our monthly whist drive whatever your ability. Excellent prizes and refreshments too.

Our next **Whist Drive** will be on **Tuesday 11<sup>th</sup> September** at Little Birch Village Hall. We start at **7.30 pm** and the entrance fee is just £2.00.

#### Community Book Exchange/Lending Library

The next Book Exchange will be on the morning of **Saturday 15<sup>th</sup> September** at the former Methodist Chapel opposite the Village Hall **10am – 12noon**.

All members of the community are invited to join us for this enjoyable monthly event which offers not only a wide range of books and DVDs (to suit all ages and interests) but also an opportunity to meet others and exchange recommendations for a good read.

There is a charge of just £1 per adult towards the cost of the hire and refreshments.

#### Future events:

**Pudding Evening**, Tuesday 16<sup>th</sup> October at 7pm at Little Birch Village Hall (more details next month)

#### Parish Bird Walk

Join us on a bird identification walk and see how many species we can hear and see. Bird expert Adrian Hodges will be with us on a 3 mile walk down to Athelstan's Wood.

Meeting at Little Birch Village Hall at **9am** on **Sunday 2 September**.

Refreshments afterwards at the village hall.

All welcome.

Angela Middleton—Voluntary Footpath Officer  
01981 540377

#### ART EXHIBITION AT KILPECK VILLAGE HALL.

Kilpeck Art Club will be holding an exhibition beginning on Saturday 8<sup>th</sup> to Sunday 16<sup>th</sup> September, from 11am-5pm each day. Art works and cards will be on sale. Light refreshments will be available. **AUTUMN SESSIONS:** The first session will be on Monday 17<sup>th</sup> September from 2-4pm in the Village Hall and then on most Mondays until December. New members are always welcome. If you want to know more, please ask at the Exhibition or e-mail [jen64davies@gmail.com](mailto:jen64davies@gmail.com). Members pay a small fee to cover hall hire. The first taster session is free.

## Longtown & District Historical Society- New Season

On **Monday, 3rd September**, study half day centred at Longtown Village Hall based on the theme of

### ROUTEWAYS IN THE LOCAL LANDSCAPE.

- |                 |  |
|-----------------|--|
| <b>2pm</b>      | <b>Talk by Eddie Proctor “Rhiws (ancient tracks ) of the Black Mountains”</b>              |
| <b>4-5.30pm</b> | <b>Walk in the Olchon Valley. Reasonable fitness level needed</b>                          |
| <b>7.30pm</b>   | <b>talk at the hall by Heather Hurley “Exploring the old Green Lanes of Herefordshire”</b> |

Please let Jeremy Milln know in advance if you intend to come on the walk, by e-mailing him at [jeremy.milln@gmail.com](mailto:jeremy.milln@gmail.com). Annual membership of the society is £10; payment may be made at any meeting. Visitors £3 per meeting, including those on 3 September. The walk is free.

*No Stress, No Worries,*

# Glazy Days



- ◆ **CONSERVATORIES**
- ◆ **WINDOWS**
- ◆ **DOORS**
- ◆ **FASCIAS**
- ◆ **SOFFITS**
- ◆ **GUTTERS**

◆ **ALSO MISTED UNITS RE-**

**01981 541121**  
**07818 611010**  
**[www.glazydays.net](http://www.glazydays.net)**  
**Email: [sales@glazydays.net](mailto:sales@glazydays.net)**

#### Dog Poo in Little Birch Area

Please can the owners of dogs who leave their dog's poo all over our beautiful surroundings start dealing with it. If you don't bag it then at least flick it into the undergrowth. You are simply disrespectfully leaving it in the middle of paths - it's your responsibility not ever other walker. Also please do not leave filled poo bags on trees/hedges - there is no magic Poo Fairy to collect them - it's a myth!

#### Much Birch Village Markets

The dates for 2017 are as follows: September 28<sup>th</sup>, October 26<sup>th</sup>, November 23<sup>rd</sup>, December 14<sup>th</sup>.

#### Local News September 2018

Congratulations go to Kate and Matt. of Ross on Wye on the birth of their daughter, Cora Jane, with proud grandparents Steve and Linda Turner of Hollybush Lane Much Birch. and brother for Franklyn.

Congratulations also go to Ruth Johnson of Becket House ,Much Birch in obtaining 2 B s and a C in her A level results and will soon be going to Keele University to study Medicene . Please can we have further A level results.

We send our condolences to Mrs. Lynn Johnson on the passing of her mother . Mrs Mary Fisher.



St Michael's Hospice  
Always a place of light and love

*The incredible support St Michael's receives from the community means your local hospice is now providing more care to more people for longer periods of time.*

*St Michael's mission is to ensure that end-of-life care is available to everyone who needs it, including patients, family and friends.*

*We want to enable people to do the things they want to do and make their life easier and more comfortable.*

*All care at St Michael's is provided free of charge, and people can be referred by any health or social care professional involved in their care.*

*We care for cancer and non-cancer patients, and because everyone's illness is unique, we offer a range of different treatments.*

*Our regular outpatient clinics and support groups can give people the confidence and advice to help them live well with their illness.*

*For example, people with fatigue and breathlessness can benefit from courses offering practical advice. Our occupational and physiotherapists can help alleviate or control a range of symptoms, and with personalised exercise programmes and home adaptations, they can make a real improvement to independent living.*

*Our person-centred approach means we also provide psychological and emotional support through our counselling service and social care team.*

*Visiting the Hospice offers people a chance to socialise, make new friends and take part in activities that range from arts and craft sessions to informative talks.*

*If you would like to find out more about how we can help you, or if you want to join a nursing team which cares, visit [st-michaels-hospice.org.uk](http://st-michaels-hospice.org.uk) or call 01432 851 000.*

#### Venus:

*Venus - I Feel Love*

*This Autumn, you won't wanna stop 'till you've got enough of Venus - I Feel Love.*

*Join up to 1,000 sparkling women who will be awash with Friday Night Fever on 21<sup>st</sup> September.*

*As it enters its second decade, Venus takes us back to the 1970s – that glittering, boogie-filled period which brought us the tunes we still treasure today.*

*With those beloved times in mind, step out under Hereford's night sky while decorated with colour, sparkle and a smile ready to walk together to remember our loved ones.*

*You'll join the sisterhood and experience the unforgettable razz-matazz that is the St Michael's Hospice Venus midnight walk.*

*Sign up at [www.st-michaels-hospice.org.uk](http://www.st-michaels-hospice.org.uk)*

Paul Broome

Communications Officer, St Michael's Hospice

Tel 01432 852 643

Fax 01432 851 022

[st-michaels-hospice.org.uk](http://st-michaels-hospice.org.uk)

[facebook.com/stmichaelshospicehereford](https://facebook.com/stmichaelshospicehereford)

[twitter.com/stmichaelshosp](https://twitter.com/stmichaelshosp)

## ANNUAL OPEN HORTICULTURAL SHOW

With only a few days to go to **Kings Thorn & Little Birch Gardening Club's Annual Open Show**, this is a reminder that anyone wishing to exhibit, needs to do so at **Little Birch Village Hall** on the morning of the show - Saturday 1 September between 9am and 10.45am.

A completed schedule should accompany entries. For details, and how to enter, call the **Show Secretary on 01981 541370**. As this is a community event entry is free.

This year there will be two new awards – the **Wilson Cup**, in memory of *John Wilson* – the long term serving member and treasurer of our Gardening Club. The other new award is the **Selby Lloyd Shield**, in memory of *Selby Lloyd* who passed away last year. The family wished to commemorate his long participation in the gardening club.

Also this year a **special award of £25** will be given to the person with the most points in any three categories of the **Domestic Section**.

For those with kids, be sure they attend the **Children's Workshop**, starting at 2pm on Friday 31 August at the Hall, to create vegetable monsters, decorated boots, poems and pictures made from leaves. Maybe even a scarecrow and decorated gingerbread men (or women).

**Little Birch Village Hall opens to the public at 2pm.** There are certain to be excellent displays of home grown vegetables, fruit and flowers. There's also **Floral Art and a Domestic Section** - showing cakes, jams and more. A new addition to our exhibits is a **Handicraft Section**.

The **Raffle Prizes** this year include a **'2 course lunch for 2'** from both *The Pilgrim Hotel* and *The Axe and Cleaver* – with prizes also donated by *Pengethley Garden Centre*, *Carrot and Wine Stores* and Little Birch's 'local' *The Castle Inn*.

After the prize giving, many entries of the wonderful produce will be available to buy! Come along for the afternoon and enjoy a **tea or coffee with a choice of home baked cakes**.

KT&LB Gardening Club welcomes new members. We meet monthly and have a variety of speakers covering all aspects of gardening. **Contact our Membership Secretary on 01981 540327**

**BRENDAN MORRIS**  
**CONSTRUCTION & CARPENTRY**  
**SPECIALISING IN uPVC**  
**WINDOWS, DOORS &**  
**CONSERVATORIES**

call now for a free quotation  
on; 07855760912  
email

[brendanmorris05@gmail.com](mailto:brendanmorris05@gmail.com)



### St. Mary's Church, Little Birch.

We would like to thank everybody who came and supported us at our fete on July 7th. We had a wonderful afternoon, England won their football match and the children were able to see a new born calf wobble to it's feet at the end. The calf has since been named Mary Fete. Thank you to all our helpers who did a great job but particularly to Kate and John Dillon who hosted the event and put in so much hard work to make it such a success.

We made £1300 which is a great result.

Also, a belated thank you to everybody who supported our Lent lunch and to everybody who helped provide a lovely meal. We raised £246 which has been sent to the Sightsavers

### A CALL FOR HELP.....

We are looking for volunteers to go on a monthly rota to help us keep Much Birch Churchyard tidy.

We do have someone to mow the grass regularly but we need volunteers to generally tidy up e.g. sweep the path, get rid of weeds and accumulated rubbish in the corners and remove dead flowers from graves. We would be so grateful for this help and you do not have to be members of the congregation. Please contact the Churchwarden, Sylvia Jones tel. 01981 540980 if you can help.

arts  
alive

**FLICKS  
IN THE  
STICKS**

at Much Birch  
Community Hall

NEW SEASON BEGINS WITH...

**Tuesday 25th September, 7.30pm - FINDING YOUR FEET 12**  
When 'Lady' Sandra Abbott (Imelda Staunton) discovers that her husband of forty years is having an affair with her best friend, she seeks refuge with her estranged, older sister Bif (Celia Imrie). The two could not be more different - Sandra is a fish out of water next to her outspoken, serial dating, free-spirited sibling. But different is just what Sandra needs and she reluctantly lets Bif drag her along to her community dance class, where gradually she starts finding her feet... and romance.  
*Starring Timothy Spall, Joanna Lumley, Imelda Staunton*

THE REST OF THE SEASON LOOKS LIKE THIS...

- Thursday 18th October, 7.30 pm - **THE GUERNSEY LITERARY AND POTATO PEEL PIE SOCIETY 12A**
- Saturday 17th November, 6.00 pm - **THE GREATEST SHOWMAN - SING-A-LONG! PG**
- Thursday 22nd November, 7.30 pm - **PHANTOM THREAD 15**
- Tuesday 4th December, 7.30 pm - **MAMA MIA! HERE WE GO AGAIN (TBC) PG**

Refreshments including hot dogs available from 7pm (5.30pm for 17/11).

Tickets £4.50 (£3.50 under 16s)

Tickets available in advance or on the door - for further info or to book tickets please email [muchbirchflicks@hotmail.com](mailto:muchbirchflicks@hotmail.com) or call 01981 540097

For further information about films and screenings visit [www.artsalive.co.uk](http://www.artsalive.co.uk) (online booking available!)

FLICKS IN THE STICKS

[www.bgbuk.com](http://www.bgbuk.com)

[info@bgbuk.com](mailto:info@bgbuk.com)

## Your one-stop design and planning solution

With over 10 years Industry experience

- Planning Drawings & Applications
- Architectural Drawing & Design
- Homes, extensions & listed buildings
- Repair & Conservation of Historic Buildings
- Historic & Timber Building Survey & Consultancy

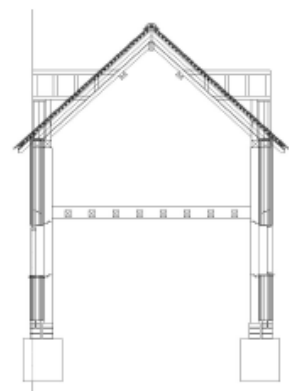
**We specialise in Planning drawings/applications  
& 3D architectural design.**



Design & Consultancy

[www.bgbuk.com](http://www.bgbuk.com) [info@bgbuk.com](mailto:info@bgbuk.com)

**Tel: 01432 607 407**



# ARTSPACE



Are you a budding artist or would be artist? Maybe you've dabbled in the past and want to get back into it? Or perhaps you want to get started but can't seem to get round to it?

ARTSPACE could be just what you need! Whatever your ability level, you will be most welcome!

ARTSPACE is an opportunity for like minded people to come along to share a place and time to do their art.... whether it be sketching, painting or other paper based art work. You will need to bring your own materials and have your own project in mind.

It will be held at **Little Birch Village Hall on Thursday afternoons 3-5pm from 4<sup>th</sup> October – 8<sup>th</sup> November**

(6 weekly sessions).

Cost will be £3 per person. Refreshments will be provided.

If you are interested please ring Maz Jooma on 541 048

## Much Birch Community Hall 100 Club

The August 2018 draw took place on 12<sup>th</sup> August in Much Birch Community Hall and the results were as follows:

1 <sup>st</sup> prize – No 9	2 <sup>nd</sup> prize - No. 14
Mr. S. Hardy	Mrs. L. Ashton
Sellack	Much Dewchurch

The next draw will take place on 8<sup>th</sup> September 2018 at 10.30am in Much Birch Community Hall.

**John Jones**  
**Promoter**

## Much Birch Church

Come and join us for  
An all you can eat Pudding Evening

and a  
Talk by The Reverend Penny Littlewood  
on  
Upstairs Downstairs

Reflections of life in a stately home

on  
Friday, 21<sup>st</sup> September 2018 at 7.30pm  
In Much Birch Community Hall

For Tickets at £8.50 ring 01981 540647 or 01981 540150

Proceeds for Stained Glass Window repairs

**ORTS**  
ORCHESTRA  
OF THE SWAN

# 8 SEASONS 2 HEMISPHERES

Vivaldi & Piazzolla  
The Four Seasons

David Le Page - Violin/Director

**SEPTEMBER**  
**14**  
**7:30pm**

**THE STEINER ACADEMY**  
Much Dewchurch, HR2 8DL  
01981 540221 - [info@steineracademyhereford.eu](mailto:info@steineracademyhereford.eu)  
Ticket £10 - Child Ticket £6 - Family Ticket: £30

Orchestra of the Swan

Concert at the Steiner Academy on Friday 14th September at 7.30pm Vivaldi and Piazzola - 8 Seasons, 2 Hemispheres "Baroque meets sizzling Tango"

In association with Arts Alive, the Steiner Academy is hosting an evening of music from the Orchestra of the Swan, now the Orchestra in Residence at The Courtyard, Hereford.

The Little Birch Village Hall Committee and Steiner Academy will provide minibus transport from the Hall at 6.30pm for any local residents who wish to attend, and will bring you back to the Hall at the end of the concert. For further information about the event, and to buy tickets, contact the box office on 01981- 540221 or [in-fo@steineracademy.eu](mailto:info@steineracademy.eu) and look out for posters locally. Adult tickets are £10, Children £6.

If you would like to use the minibus transport, please contact Linda Maden on 01981-540532 or at [linda-maden@btinternet.com](mailto:linda-maden@btinternet.com) to book your seat on the bus. The transport is free but you need to book your seat by Friday 7th September.

***The Much Birch Parish Council Meeting dates for 2018 are as follows: September 6th, October 4th, November 8th and December 6th.***

Ross Library Development Group: The new season opens with our Talk on Tuesday evening **September 18th**, 7.00 for 7.30 p.m. in the Library. MATTHEW HALL, novelist and screenwriter, will be the Speaker and he will tell us about his career and his current drama series '*Keeping Faith*'. Entry is £5.00 for non-members, £4.00 for Members and Students are free. Refreshments will be available for a donation. All profits go to improve the Ross Library facilities. For details see the website [www.rldg.org.uk](http://www.rldg.org.uk)

Ross Science Society: Our autumn season begins on Wednesday evening, **5th September**, 7.00 for 7.30 p.m. at the Castle Lodge Hotel, just off the Wilton roundabout. The illustrated Talk will be given by Dr. DAVID MORGAN and he will put the question ... ARE WE ALONE IN THE UNIVERSE? .... he will outline the 'Drake Equation'. All interested are welcome. Entry is £4.00 per person and the annual subscription of £16.00 covers all the Talks. There is additional parking opposite the hotel. For further details contact the Secretary on 01989 720539.

Ross Arts Appreciation Society: The September Meeting will be held on Friday evening, **7th September** at the Lar-ruperz Centre, Ross (Watkins Room) 7.00 for 7.30 p.m. Prof. ALLEN FISHER will give us an illustrated lecture entitled 'POETRY IN AND FROM ART', following this theme, linking poetry with art, through several centuries. All interested are welcome; entry is £4.50 for non-members, £2.50 for members... refreshments are provided. For further details ring 01989 720539 or 01989 562424



## THE AXE & CLEAVER

Much Birch, Hereford, Herefordshire. HR2 8HU

Tel No: 01981 540203

Proprietors Andy & Sue Hoare

## WEEKLY SPECIALS

MONDAY –FRIDAY LUNCHTIME SPECIAL

**TWO COURSES**

**£9.95**

~~~~~

**WEDNESDAY**

**SENIOR CITIZENS' LUNCH**

**TWO COURSES**

**£6.95**

~~~~~

**SUNDAY LUNCH**

**TWO COURSES**

**CHOICE OF THREE ROASTS**

**+**

**CHOICE OF DESSERTS**

**£12.95**

BOOKING ADVISABLE

Improve flexibility, build strength and develop control and endurance

# PILATES

with Alison Allan

**Little Dewchurch Village Hall**

(3 miles from the A49,  
between Hereford and Ross)

**Mondays (am) and Wednesdays (pm)**

**Telephone: 01432 840491**

**Email: [alionspilates2016@gmail.com](mailto:alionspilates2016@gmail.com)**



STOTT PILATES<sup>®</sup>  
merithew CORPORATION



**Little Birch &  
Aconbury**  
NEIGHBOURHOOD PLAN

## Little Birch & Aconbury Joint Neighbourhood Development Plan

### Draft Plan

The revised draft plan, following the comments from our Public Consultation was approved in July by both parishes. We are now awaiting a final decision by Herefordshire Council.

When the plan has been through a number of further checks it will reach its final stage – **The Referendum**. A majority of those who vote will need to agree with the Plan for it to be finalised.

**Aconbury and Little Birch Neighbourhood Development Plan 2011 -2031** will then come into use with regards to all Herefordshire Council planning decisions for both Aconbury and Little Birch.

For updates and notifications of future meetings please check out the website – [www.littlebirchparishcouncil.org](http://www.littlebirchparishcouncil.org).



**BAYLEY'S  
WINDOW CLEANING  
SERVICE**

WATER FED POLE AND TRADITIONAL

WE ALSO CLEAN:-

- ⇒ GUTTERS AND FACIAS
- ⇒ CONSERVATORY ROOFS

***FREE QUOTATIONS***

\* REFERENCES CAN BE GIVEN \*

\* ESTABLISHED IN AREA \*

PHONE ANDREW

HOME: 01432 508979

MOBILE: 07771 870891

Email: bayleyscleaning@gmail.com

## Self-storage Herefordshire

£15 per week—no VAT

20ft x 8ft

7 Days a week access

Long or short term rental.

## Seasoned Firewood for Sale

**George Cole**

**Mob: 07800952317**

**Tel: 01981241274**

**Email: coleg600@gmail.com**



FB: Murphy's Paw  
Doggie Services

### **Murphy's Paw**

**The home of happy woofers!**

**Doggie Daycare**

**One to One Grooming**

**Home Boarding**

Tump Lane, Much Birch

Tel: Tricia 07732 286069

murphyspaw2005@gmail.com

www.murphyspaw.co.uk

***Providing a true "home from home" environment.***

***We welcome friends, old and new!***

# AQUASSIST

## LIQUID WASTE SOLUTIONS

### Septic Tanks & Treatment Plants

- emptying
- servicing
- jetting
- installations
- blocked drains
- emergencies

Locally based company

01432 353 888

book@aquassist.co.uk

www.aquassist.co.uk



[www.greenleafarchitecture.co.uk](http://www.greenleafarchitecture.co.uk)

E. [info@greenleafarchitecture.co.uk](mailto:info@greenleafarchitecture.co.uk)

Tel. 01981 257180 M. 07946457251

Friendly and reliable, chartered Architectural Practice based in Wormelow.

All Architectural work undertaken. General advice; Planning applications; Detailed design for Building control and Tender; Project management



# Great Local Food & Drink in Much Birch

All Day Every Day



PILGRIM  
HOTEL



VALLEY  
RESTAURANT

**Serving Great Local Food & Drink**

**Breakfast \* Morning Coffee \* Lunch**

**Afternoon Tea \* Dinner \* Celebration Meals**

**Conferences \* Private Dining \* Murder Mystery Dinners**

**Menus on website [www.pilgrimhotel.co.uk](http://www.pilgrimhotel.co.uk)**

**Booking is recommended - 01981 540742**

## POLISHED NAIL & BEAUTY LOUNGE

*'Where friends and beauty meet....'*



A GIRL SHOULD BE TWO THINGS..

*Classy & Fabulous*

- COCO CHANEL

- \* OPI MANICURES \* PEDICURES \* GEL POLISH \* SCULPTURED ACRYLIC/GEL NAIL EXTENSIONS
- \* BEACH/HOLLYWOOD TOES \* SIGNATURE EYEBROWS – SCULPT, COLOUR AND CORRECT
- \* THREADING \* WAXING \* SEMI PERMANENT EYE LASHES

**REGULAR AESTHETIC CLINICS WITH Dr Sarah Parkes**

GENTLEMANS LOUNGE HELD EVERY TUESDAY AFTERNOON FROM 2-5PM

*'The Wood Shed'*

**PENGETHLEY GARDEN CENTRE, Peterstow, Ross on Wye, HR96LL**

Email: [Polished.jacqueline@gmail.com](mailto:Polished.jacqueline@gmail.com)



**Polished-Nail And Beauty**

**01989 730791 or 07759131783**

**OPEN: TUESDAY – SATURDAY 9am–5pm. Complimentary Tea and Coffee**



# TEA ON THE TRAIL

AT ST MARY'S CHURCH, LITTLE BIRCH

## Refreshments for walkers

Enjoy a break for a cup of tea or coffee



**Donations** to cover costs and for much needed renovation work at St Mary's Church.

Thank you

Please send copy for the October Newsletter to [editorial@birchesnews.org.uk](mailto:editorial@birchesnews.org.uk) or written contributions to Liz Hall at Walmere, Wrigglebrook, Kingsthorpe HR2 8AW.

—by 18th September please.

### Little Birch Gardening Club News

What a challenging summer we have had! Too much rain and then not enough - vegetables and fruit don't know if they are coming or going but despite it all, we get out the seed catalogues for the next year full of enthusiasm and visions for the seasons ahead of us. Just as well then that our next speaker on WEDNESDAY 26th SEPTEMBER is George Alway who is going to give us lots of 'Hints and Tips' - bring your notebooks and any questions you may have - there must be loads!

We are being entertained on WEDNESDAY 31st OCTOBER by our own 'new' chairperson, Janet Gwinnett, on her 'First Year of Retirement for a Gardener'. (Now there's a thought - do we ever really retire!) What a year to choose - this one should be interesting on how she overcame (or not) the challenges - looking forward to this.

Trying something different, in June the club hosted an evening of 'Nature in Music and Verse'. We were



## About Us

Carrot&Wine Stores is brand new to the Hereford area.

Our family run company aims to offer all the convenience and family friendly service of a local store with the added benefit of locally sourced produce.

We stock local groceries, meats and cheese to local award winning cider, wine and all the daily essentials such as bread, milk, eggs and newspapers.

Open 7 days from 7am to 9pm

Find us at **Wormelow** on the **A466!**

(Postcode for Sat Nav: HR2 8EJ)

CARROT & WINE  
STORES  
——  
WORMELOW

musically entertained by Cantando, a group of eight enthusiastic guitar players. Their repertoire is classically based with a few modern pieces. This was interspersed with poems and readings theme linked to a celebration of gardening and nature. It was a super evening, enjoyed by all who attended and, of course, a hearty ploughmans supper went down very well.

If you require any information about the guitar group, or indeed would like to join them, then give Lesley Chapman (musical director) a call or see her at any of our meetings.

We are a very friendly group and would love to see some new faces who would be made most welcome. Come along to any of our meetings held in the Village Hall at Little Birch, usually the last Wednesday of every month starting at 7.30 pm, refreshment available and a good chat!

Looking forward to seeing you.

Jenny Baldwin - on behalf of LBGC Committee

## THE MASONS AT MERRIVALE

I have just re-read my last article and smile at the words grim, dark, wet winter. How long ago that seems and now the hot summer has created many more challenges on the farm. Despite the dry conditions, grazing of the cows has continued throughout the summer.

We split our grazing fields into smaller paddocks using electric fencing and then use a method known as 'strip grazing'. This involves using more electric fencing within each paddock to split it into smaller sections, or 'strips' and ensures we utilise as much of the grass as possible. Generally, each paddock is grazed three times before they move onto the next one. Each week we walk all of our grassland with a tool called a plate meter which measures the density of the grass and helps us to monitor what we're feeding and how quickly it's growing.

With robot milking, the cows are sent grazing in one direction by day and another by night so we have two paddocks in use in a 24 hour period. This works particularly well at Merrivale because the farm buildings are located in the middle of the farm.

We did keep the cows in a few times in July when we had particularly hot days. However, the buildings are really designed to keep the cows warm in winter, not cool in summer and with no fans to circulate air some cows still found the heat difficult. They continued to go out to graze at night when conditions were cooler.

Because of the drought we were very short of grass and so, as has widely been reported in the press with other farmers, we have been feeding our winter supplies of silage to keep the cows full and stocks are now low.

We have done two more silage cuts, one in June and one in July but due to the drought this provided less than normal. It did however show up the deep rooting red clover, chicory and Lucerne in the fields as they still grew well. If these summers continue we will have to look at growing more crops like these, which are better suited to the dry conditions.

Alongside our third cut silage in July, we also cut our wholecrop. This was a field sown with spring barley and peas which we cut early while the grain is still soft. It is put in a silage pit and provides a high quality feed which we can mix with grass silage to feed in the winter.

Thank heavens for the rain in the last few weeks as the grass is recovering and we now look on track to do our fourth silage cut in the next couple of weeks. We will then hope to do our final cut at the end of September. We will assess our stocks after the final cut to make sure we have enough to last us through the winter.

Where the wholecrop silage was taken we have now cultivated and sown stubble turnips and forage rape. Weather permitting, we will graze youngstock here during the winter months to ease the situation.

## **Aconbury Shepherd Huts**



**Our huts are hand built to the highest of standards. Our standard hut includes insulation, double glazing, electrics and decoration.**

**Uses include craft room, play house, sleep over's etc.**

**Come and see our display hut or request our new brochure**

**We also build stables, field shelters, garden sheds, play houses, garden features and bespoke gates. Please ring for our dedicated brochure**

**Stephen Turner. The Underhills, Hollybush Lane, Much Birch, Herefordshire. HR2 8HX.**

**Telephone: Office 01981 540090  
Mobile 07768 206296**

**[www.aconburyshepherdhuts.co.uk](http://www.aconburyshepherdhuts.co.uk)  
[turnersofcrossways@btinternet.com](mailto:turnersofcrossways@btinternet.com)**

The main job at the moment is the straw harvest, this is essential to provide us with all of our winter bedding. Although we are organic, we are allowed to use conventional straw for bedding. We are fortunate to be able to buy all of our straw from Aconbury Court, our neighbour, which makes carting much easier.

Straw is bought by the acre as the combine leaves it in the field. We then have it baled and cart it home. As I write, we have one field left to bale but the straw has been rained on so we are waiting for it to dry, be baled and then our straw harvest for 2018 will be complete. Unusually, there has been more straw per acre this year than last – a blessing as we should have plenty to see us through the winter without having to buy more in. With national straw stocks so low, arable farmers in the east of the country have not chopped their straw back onto the field this year, but sold it to farmers in the north. The price has of course made this viable for the arable farmers to do.

We look forward to an open autumn so that the cattle can stay out for as long as possible but we will, of course, just have to take what comes.



## HOLLYBUSH HIRE

*Vintage Tea Set Hire*

*Woodfield, Hollybush Lane, Much Birch, HR2 8HX*

*07989 854593 / 01981 541109*

*[emmadeer@hotmail.co.uk](mailto:emmadeer@hotmail.co.uk)*

*Tea Cups, Saucers & Tea Plates*

*Sandwich / Cake Plates*

*Teapots, Sugar Bowls & Milk Jugs*

*Cake Stands*

*Lanterns, Mirrors*



THE CASTLE INN @ LITTLE BIRCH

## OPENING TIMES



Mon & Tues: closed

Wed: 6pm - 11pm

Thurs: 6pm -11pm

Fri: 6- 11pm

Sat: 12pm- 3pm. 6pm-12pm

Sun: 12pm- 6pm

Seb and Emma welcome you to the Castle Inn for home cooked food, real ale and friendly atmosphere!

New pub number; 01981540943

*Call for any information and bookings!*

## R&R FIREWOOD

*Well seasoned hardwood*

*Cut to any size*

*Delivered to your door*

**STEPHEN or TARA**

**Tel: 01432 870282**



**CUSTOMER  
SUPPLIERS  
SALES  
RECEIPTS  
PURCHASES  
BOOKKEEPING  
JOURNALS  
RECORDING  
INCOME  
SYSTEM  
TRANSACTION  
LEDGER  
DAYBOOK  
GENERAL**

## W.M. PARTINGTON

### GENERAL BUILDER

- MINI-DIGGER & EXCAVATOR HIRE

RENOVATIONS  
BARN  
CONVERSIONS  
NEW BUILD  
EXTENSIONS

ROOFING  
CONCRETING  
PLASTERING  
GROUNDWORK

UPVC WINDOWS  
AND DOORS  
BRICKWORK  
STONEMASONRY

**RING FOR A QUOTATION**

**MUCH BIRCH  
07774 805369 / 01981 541109**

### EJ PARTINGTON BOOKKEEPING

Bookkeeping & Accounting Specialist

Woodfield, Hollybush Lane, Much Birch, HR2 8HX

**07989 854593 / 01981 541109**

[emmadeer@hotmail.co.uk](mailto:emmadeer@hotmail.co.uk)

Bookkeeping	VAT Returns
Invoicing	Management Accounts
Payroll	Self-Assessment Returns

Emma Partington has over 10 years experience in the finance industry both in practice and in industry, a local business that is able to help with all your bookkeeping needs.

**Call or e-mail today for a no obligation discussion about your requirements.**



# healthyfeet

mobile clinic

## Mobile Foot Clinic

Experienced, Fully Qualified and Registered  
Foot Health Practitioners, First Aid Trained  
and DBS Police Checked



- Nail Trimming
- Thickened Nails
- Corns
- Callus (hard skin)
- Cracked Heels
- Verrucas
- Fungal Nails & Infections
- Ingrown Toenails
- Diabetic Foot Care



**Sophie Limming Dip FH MCFHP MAFHP**  
Qualified & Registered Foot Health Practitioner

**Tel: 0749 309 2960**

sophie@healthyfeetclinic.co.uk www.healthyfeetclinic.co.uk

## Jargon-free Computer Help



## Computer Tuition, Technical Support and Buying Advice.

Local, friendly help with  
no jargon and  
reasonable rates

**Ben Roberts**  
**01981 540100**  
**07702 760789**

## décor solutions

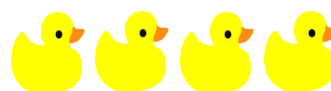
**Tim Jones**  
Painter and Decorator



**Kings Thorn, Herefordshire, HR2 8AW**  
**Tel: 01981 540242 Mob: 07810 895355**  
[tjsi@me.com](mailto:tjsi@me.com)

Three generations of experience specialising in Painting and Decorating services.  
General property maintenance duties carried out.  
Fully insured. Good competitive rates.  
A high standard of workmanship and customer satisfaction guaranteed.

## WYE BATHROOMS



Local family run company. Design & installation of  
Bathrooms & shower rooms



We are also registered with NIC-EIC for all your Electrical  
work

Call Paul for a free quotation

Or visit

[www.wyebathrooms.co.uk](http://www.wyebathrooms.co.uk)

07894-563897



## EMMA BRADBURY EQUINE

Mobile horse clipping services  
Horse sitting / Holiday Cover  
Or just an extra pair of hands!

**25 years experience with horses**  
**Fantastic references available**

**01981 541385 : 07725 536648**  
**01981 541385 : 07970 346460**

*18 year old babysitter available weekdays/  
weekends. £6 an hour. Ring 07909 940916 for more  
details.*

*Cecily Daffern*

## Little Birch Parish Council

Your Little Birch Parish Council Councillors are:-

Cllr Ben Roberts	Chairman	01981 540100	b3nroberts@gmail.com
Cllr Steve Naylor		01981 541323	steve.naylor5@btinternet.com
Cllr Mike Morley		01981 541027	morley04@globalnet.co.uk
Cllr Annette Wissler		Contact through the clerk	
Cllr Janet Gwinnett		01981 540651	janetgwinnett@hotmail.com
Angela Middleton	Volunteer Foot Paths Officer	01981 540377	ajbmiddleton@hotmail.co.uk
Sophie Glover	PC Clerk	01432 270499	littlebirchpcclerk@hotmail.co.uk

Parish Council meetings usually happen at 7.30pm on the first Wednesday of the month and all parishoners are very welcome to attend. Agendas are posted on the Parish notice board at least three days in advance and are also on our web site.

Mrs Sophie Glover, Little Birch Parish Clerk, The Orchard, Ridgehill, Hereford HR2 8AG

Website: [www.littlebirchparishcouncil.org](http://www.littlebirchparishcouncil.org)

Please see the following from Angela Middleton, our Voluntary Footpath Officer:

### PLEA TO LANDOWNERS AND FARMERS

As crops and grass begin to grow, please be aware and keep all footpaths clear on your land.

*For cross-field public rights of way: a minimum width of 1 metre for a footpath, and 2 metres for a bridleway.*

*For field-edge footpaths: a minimum width of 1.5 metres, and 3 metres for a field-edge bridleway.*

*Info from Gov.uk*

Attention may be needed more than once during the growing season as crops and brambles/nettles grow. When the way is apparent walkers will know exactly where they can go. It is very enjoyable and encouraging to walk on a good path. Thank you for your help with this.

## Little Birch Parish Facebook Group



Find the latest news, events and business listings all in one place.

You are welcome to promote your local business, advertise a local event or post news or information of interest to the village and surrounding area.

Search for *Little Birch Parish Group* on Facebook

### Yoga



In Much Dewchurch and Steiner Academy

Mondays 6.00—7.15

- ⇒ Tension and stiffness?
- ⇒ Back ache, backache, general aches and pains?
- ⇒ Difficulty sleeping?

Learn how to relax and let go. Discover how you can move more freely and improve your posture. A practical approach to yoga that is adaptable to anyone regardless of age or physical condition. All welcome

- ◆ Small group Classes
- ◆ Individual attention

## GARTH BRADBURY FENCING LTD

All types of fencing

Gates

Field Shelters

Timber Outbuildings

[www.gbfencingcontractors.com](http://www.gbfencingcontractors.com)

[garthbradburyfencing@hotmail.com](mailto:garthbradburyfencing@hotmail.com)

01981 541385 : 07970 346460

17th July 2018

**PARISH MEETING** - at the Parish Council Meeting held on the 5<sup>th</sup> July 2018 at the Much Birch Community Hall. Those present heard about local planning applications and the outcome of the appeal for building of houses in Tump Lane. The appeal had been allowed. The approval was given for name plate signs for Forge Lane and advisory HGV signage for the same location was also approved. The Parish Council would now purchase and erect the signs. A new Parish Councillor was co-opted and she will be known to many already for her work with the Violette Szabo GC Museum in Tump Lane. The new councillor is Miss Rosemary Rigby MBE and the Parish Council is pleased to welcome her to the Team. The Parish Council is still seeking a new Footpath Officer. Please contact the Clerk, or one of the councillors, for more information about the role of Footpath Officer. The future Much Birch Parish Council Meeting dates for 2018 are as follows: No meeting in August, then September 6<sup>th</sup>, October 4<sup>th</sup>, November 8<sup>th</sup> and December 6<sup>th</sup>. The next meeting of the Parish Council will be held on **Thursday 6<sup>th</sup> September from 7.30pm** - at The Much Birch Community Hall. Please see notice boards and website for agendas. As always the public and press are more than welcome to attend and will have the opportunity to speak directly to their representatives.

A reminder that:-

**Your Much Birch Parish Councillors are:-**

Cllr Alison Cook (Chair) Jasmine Cottage, Wrigglebrook Lane, Kingsthorpe, Hereford, HR2 8AW, e mail [thecooks@wyenet.co.uk](mailto:thecooks@wyenet.co.uk) Tel. 01981 540703  
Cllr Steve Turner (Vice Chair) The Underhills, Hollybush Lane, Much Birch, Hereford, HR2 8HX, e mail [turnersofcrossways@btinternet.com](mailto:turnersofcrossways@btinternet.com) and Tel. 01981 540090  
Cllr Andrew Crum Anfield House, Barrack Hill, Kingsthorpe, Hereford, HR2 8AX, e mail [a.crum@btinternet.com](mailto:a.crum@btinternet.com) Tel. 01981 540002  
Cllr Roisin Burge The Old Hall, Barrack Hill, Little Birch, Herefordshire, HR2 8AX [roisinburge@hotmail.com](mailto:roisinburge@hotmail.com) Tel. 01981 540724  
Cllr David Baldwin The Granary, Much Birch, Herefordshire, HR2 8HS [baldwin79@btinternet.com](mailto:baldwin79@btinternet.com) Tel. 01981 541198  
Cllr Rosemary Rigby MBE Cartref, Tump Lane, Wormelow, Herefordshire, HR2 8HN Tel. 01981 540477

Full minutes of the meetings and information etc. can be found on the Parish Council website following the link found in this summary. [www.muchbirchparish.org.uk](http://www.muchbirchparish.org.uk).

You can also find us on Twitter at <https://twitter.com/MuchBirchPC> and Facebook at <https://www.facebook.com/groups/Much.Birch.Parish>

---

## South Hereford Rural Safer Neighbourhood Team (SNT)

**Lowri Anderson PCSO 40247**

**Hereford City Southside and Rural SNT**

**West Mercia Police**

### Get in touch

**101** to talk to your local SNT or report a crime  
[herefordsouthside.snt@westmercia.pnn.police.uk](mailto:herefordsouthside.snt@westmercia.pnn.police.uk)  
[www.westmercia.police.uk](http://www.westmercia.police.uk)

**Herefordshire Cops / @southsidecops**

Only call 999 in an emergency, when a crime is in progress or life is in danger.

**For daily updates on incidents in your area register for our Dotmailer service via [www.westmercia.police.uk](http://www.westmercia.police.uk).**

### Make the difference

For more information about becoming a Special Constable, please visit,

**Warwickshire Police:** [www.warwickshire.police.uk/specialconstables](http://www.warwickshire.police.uk/specialconstables)

**West Mercia Police:** [www.westmercia.police.uk/specialconstables](http://www.westmercia.police.uk/specialconstables)



Where we work; South Wye SNT is based at South Wye Police Station, Goodrich Grove, Newton Farm, Hereford, HR2 7DB, we work around the areas of Rural: Aconbury; Allensmore; Ballingham; Bolstone; Callow; Dewsall; Dinedor; Garway; Grafton; Harewood; Haywood; Hentland; Holme Lacy; Kenderchurch; Kentchurch; Kilpeck; Kingstone; Little Birch; Much Birch; Little Dewchurch; Llandinabo; Llanwarne; Lower Bullingham; Much Dewchurch; Orcop; Pencoyd; Pontrilas; SDevereaux; St Weonards; Tretire with Michealchurch; Thruxton; Treville; Wormbridge; Wormelow.

### Your team

Sgt Emma Freer, PC Roger Bradley, PC Jim Phillips, PCSO Lowri Anderson, PCSO Adam Westlake, PCSO Christina Howard, PCSO Christopher Yarwood.

**About your team....** Safer Neighbourhood Teams work with local people and partners to identify, tackle and solve issues that matter to the community where you live.

Making neighbourhoods safer by cutting day to day crime and anti-social behaviour is at the heart of keeping people in West Mercia safe.

