

# The Birches

## Community Matters Newsletter

Kingsthorpe, Much Birch, Little Birch,  
Aconbury & Wormelow **October 2025**



Birches Newsletter online: [www.birches.news](http://www.birches.news) & [www.muchbirchparish.org.uk](http://www.muchbirchparish.org.uk)



### Murder at D'Arcy Hall

A murder mystery evening

Saturday 18 October  
7.30 pm  
Little Dewchurch Village Hall

Tickets £10  
(Including Ploughman's supper)  
Cash bar

**Pre-booking essential**

Text 07795 277244  
or  
[suemmason50@hotmail.com](mailto:suemmason50@hotmail.com)



## IN MEMORIAM

A CONCERT  
FOR  
REMEMBRANCE

MUCH BIRCH CHURCH  
HEREFORD

FRIDAY 7TH NOVEMBER 7PM

# FAURÉ REQUIEM

with works by Gowland, Aston, Bainton and others

GAUDEAMUS VOCAL CONSORT  
ROBERT GREEN: ORGAN

**FREE ADMISSION**  
with donations invited for the church & performers



Much Birch Church, A49 Ross to Hereford, Much Birch, Hereford, HR2 8HT

for more information visit [www.creativefield.uk](http://www.creativefield.uk)

## CHRISTMAS PRIZE BINGO



LITTLE BIRCH VILLAGE HALL  
FRIDAY 28TH  
NOVEMBER  
EYES DOWN AT 7:30PM

Fun for the whole family  
Refreshments available

Wear your Christmas Jumper  
Prize for the best one!



Garden Show  
Report p7

# The Birches Community Quiz

Friday 3rd October

7.30pm

Much Birch Community Hall

Teams of four are invited to  
take part.

Entry £12 per team,  
includes refreshments.

If you want to bring your own  
drinks, glasses provided.

Proceeds to local charities

Please get in touch with Carole if you  
are interested in taking part.

Email [carole.chichester@btinternet.com](mailto:carole.chichester@btinternet.com)  
telephone 01981 540095/07503 581724

## Short Mat Bowls at Little Dewchurch Village Hall

We started our short mat bowling again on Tuesday 2nd September and meet from 7pm to 9pm every Tuesday at Little Dewchurch Village Hall apart from the 3rd week of the month when it takes place on a Thursday. First 3 weeks free trial, then £5 a session, includes tea and biscuits. Friendly and fun activity for the winter months! Contact John Caton: 01981 540415



## Calling all Book Lovers

Coffee Morning with Books

10-12 noon Little Birch Village Hall

Thursday 2nd & Saturday 16th October

Enjoy a cup of tea or coffee with cake & biscuits and have a chat. Make new friends, catch up with old friends. Take a book, leave a book or both. Families & well behaved dogs are welcome.

### Book of the Month, The Wide Wide Sea by Hampton Sides

Not just for lovers of adventure and exploring, anyone would enjoy this book. Captain James Cook, loved by his crew and feted at home, makes a last fateful journey where his luck runs out.

"A rollicking good read" says the Daily Telegraph and I would agree with that. A real page turner, fascinating and thrilling, it takes you right into the thick of the action Hampton Sides is a real find.

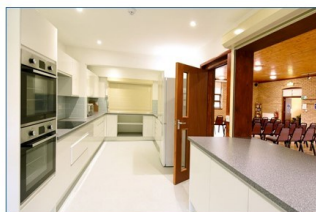


## Much Birch Community Hall

Much Birch Community Hall is available for hire to groups meeting regularly and for one-off individual events.

We can offer:

- A well appointed community hall in pleasant surroundings
- Superb kitchen facilities
- New cloakroom facilities Including accessible toilet
- Several smaller meeting rooms
- Disabled access to the front and rear of the building
- Car parking
- Grassed area to the rear of the building
- Fees include heating when required and use of the kitchen



For further information please contact the Secretary Sylvia Jones on 01981 540980 or email : [mbchsec@gmail.com](mailto:mbchsec@gmail.com) or visit the website: [www.muchbirchcommunityhall.org](http://www.muchbirchcommunityhall.org)

## Parish Walk Sunday 26th October

Meet at Little Birch Village Hall 2pm

The walk will be approximately 4 miles, exploring footpaths in Aconbury and Little Birch. There will be refreshments on our return to the hall.

Chris Fowler

## Photography Group Meeting

Fayre View, Little Birch Road, Kingsthorpe

Saturday 18th October 10-12am

Anyone interested in photography is welcome.

[Sally.nichol@btinternet.com](mailto:Sally.nichol@btinternet.com)

tel 07803032928



## Mark Burton Property Maintenance Ltd



- Your local, friendly handyman
- Here to help you make the most of your property
- Let me do the jobs you can't or don't have the time to do
- No job too small

Call Mark on: 07794470446



A luxury self-catering cottage  
just minutes from the beach in  
Saundersfoot, Pembrokeshire.

[seadreamssaundersfoot.co.uk](http://seadreamssaundersfoot.co.uk)  
[stay@holidaysaundersfoot.co.uk](mailto:stay@holidaysaundersfoot.co.uk)  
Tel: 07885 604720

## WE ARE FARMING MINDS



We are Farming Minds registered charity has been set up by farmers for farmers to tackle mental health in the farming community within Herefordshire.

### How can we help?

#### 24 Hour Support Line:

We run a **FREE 24 hour Support Line 7 days a week** for farmers and their families within Herefordshire who are feeling distressed and need someone to talk to anonymously.

#### Counselling:

We provide **fully funded counselling to anyone in the Herefordshire farming community** who may be in emotional distress.

#### Training:

We offer **FREE mental health awareness training** to anyone living or working in or with the farming community in Herefordshire.

#### Social Events:

We run a series of **FREE social events throughout the year** to break the isolation often felt by the farming community in Herefordshire.

#### Befriending:

Befriending volunteers offer companionship and support to people who are isolated and lonely – they may visit you at home and/or phone for a regular chat. A befriender can offer conversation and a listening ear to those that need it.

Call our Support Line:

**0808 802 0070**

Or text:

**07786 203 130**

General enquiries: [wearefarmingminds@gmail.com](mailto:wearefarmingminds@gmail.com)

[www.wearefarmingminds.co.uk](http://www.wearefarmingminds.co.uk)



"Taking the bull by the horns" to tackle Mental Health in the farming community

Registered charity number: 1191461



WeAreFarmingMinds

## PILATES with Alison Allan

LITTLE DEWCHURCH VILLAGE HALL

### SENIORS PILATES

Monday 11.15am-12.15pm



PERFECT  
BALANCE

### Book Now

☎ 07947 011707

🌐 [www.perfectbalance.life](http://www.perfectbalance.life)

✉ [alison@perfectbalance.life](mailto:alison@perfectbalance.life)

### Join Alison Allan for Pilates

Pilates sessions are taught as small group classes and as individual one to one sessions.

Pilates is a great way to keep your body feeling agile and energised. The movements focus on posture, alignment, core strength, balance and flexibility.



## Tai Chi Movements for Wellbeing

LITTLE DEWCHURCH VILLAGE HALL

Thursdays 10.45am - 11.45am

### Book Now

☎ 07947 011707

🌐 [www.perfectbalance.life](http://www.perfectbalance.life)

✉ [alison@perfectbalance.life](mailto:alison@perfectbalance.life)



Starts  
Sept  
2024

PERFECT  
BALANCE

Join Alison Allan for TMW (Tai Chi Movements for Wellbeing)  
A beautifully flowing and carefully selected sequence of movements  
designed to enhance and promote our physical and emotional wellbeing.  
The movements which have origins in Tai Chi, Chi Kung and meditation are  
simplified and can be performed standing or seated making it accessible  
to everyone.

## Golden Valley Funeral Services

Independent Family Funeral Directors

Proudly supporting our local community  
since 2018

Family run funeral directors covering  
Hereford and surrounding areas.

We are here for you 24 hours a day, 365  
days a year, call us at your time of need

**Tel: 01981 257203**

[info@goldenvalleyfuneralservices.com](mailto:info@goldenvalleyfuneralservices.com)

Wormbridge Court, HR2 9DH

[www.goldenvalleyfuneralservices.com](http://www.goldenvalleyfuneralservices.com)

📘 @goldenvalleyfuneralservices

## Acton Building & Construction



Find us on:  
facebook

Email: [richard@actonbuilding.co.uk](mailto:richard@actonbuilding.co.uk)

Mob: 07863134329

**Local established building company with  
over 30 years experience**



New builds, extensions, renovations,  
barn conversions. Projects taken  
from design to occupation. All works  
fully guaranteed.

Kitchens and bathroom specialists.

Refurbishment or new installation.

Tiling, wet panels, wet rooms, under  
floor heating. Design to completion.



We offer a full green energy service,  
from solar pv, battery storage, car  
point chargers etc, to air source units,  
heat pumps new or retro fitted.

Everything accessed and quoted free  
of charge.

[www.actonbuilding.co.uk](http://www.actonbuilding.co.uk)

Tel: 01989740595



*Your Leak-Stopping, Pipe-Fixing, Drain-Busting Heroes!*

**Got a Drip, Block, or Plumbing Panic?**

We're fast, friendly, and ready to bust  
that plumbing problem!

### Our Services Include:

- ✓ Emergency Callouts
- ✓ Leak Detection & Repairs
- ✓ Bathroom & Kitchen Plumbing
- ✓ Radiator & Heating Work



Scan the QR Code  
to Get Help Fast!

Call: 07932 306430

Mail: [help@plumbingbusters.co.uk](mailto:help@plumbingbusters.co.uk)

Web: [www.plumbingbusters.co.uk](http://www.plumbingbusters.co.uk)

The Birches Newsletter is also available online  
[www.birches.news](http://www.birches.news) [www.muchbirchparish.org.uk](http://www.muchbirchparish.org.uk)





**WALKER'S WALKS  
AND PET CARE**

~DBS checked, qualified and insured~

I offer stimulating dog walks and  
enriching pet sitting around  
Hereford/ Welsh border.

walkerspetcare@outlook.com

07842966678

Facebook - @Walker's walks and pet  
care

## Ping's Hairdressing & Barbers



Experienced hairdresser and stylist located in  
own salon at Thorn Lodge, Aconbury Close  
(old Post Office site). Home visits can also be  
arranged. Weekend and evening  
appointments available. Reasonable rates.

Fully C&G and NVQ certified

For appointments and further information  
phone Mobile 07450 343454 or

## Riddle

?

The more you take the more  
you leave behind

Answer in November

## AVALON TREE SURGERY



'We care for your trees'

Matthew Thomas  
Over 20 years Experience  
NPTC Qualified  
Fully Insured

www.avalontreesurgery.co.uk  
Mob: 07794 569284  
Tell: 01981 540478

All Aspects of Tree Work Undertaken

## GNL Accountancy

*Chartered Certified Accountant*

Self Assessment Tax Returns:  
Savings/Pension/Dividend/Property Income  
Sole Trader

Corporation Tax Returns

VAT Returns

Preparation of Accounts  
Financial Performance Analysis



**gabrielle@gnlaccountancy.co.uk**

gnlaccountancy.com  
07480830305

# DECOR SOLUTIONS

tjsj@me.com

## Painting & Decorating

Tim Jones

Tel 01981 540242

Mob 07810 895355

3 Generations of experience, specialising in Painting & Decorating services, General property maintenance duties carried out, Fully insured, Good competitive rates, A high standard of workmanship & customer satisfaction guaranteed.

## Little Birch Village Hall Committee June 2025

Lesley Chapman; Chair, John Ellis -Braithwaite; Treasurer, Linda Maden; Booking Secretary, Kate Dillon; Parish Council Rep, Geoff Nichol; Maintenance, Iris Lloyd, Rick Hampton, Jane Bolam; Drama Group, Elisabeth Taylor; Birches Newsletter Editor, Cathy Ellis-Braithwaite; Minute Secretary, Sam Davies.

## Little Birch Parish Councillors

Cllr Steve Coles Cllr Tom Palfrey

Cllr Chris Atkinson Cllr Nick Deacon

Neil Barrington, clerk lbpcclerk@gmail.com

Website [www.littlebirchparishcouncil.org](http://www.littlebirchparishcouncil.org)

## Little Birch Parish Facebook Group

Find news, events & business listings. Promote your business, advertise a local event or post news & information of interest to the village & local area.

## Footpath Officers

If you have any queries about footpaths contact:

### Little Birch and Aconbury

Chris Fowler [chrisfowler1@hotmail.co.uk](mailto:chrisfowler1@hotmail.co.uk)

07931 292998

### Much Birch including Kingsthorpe:

David Irwin [david.irwin13@btinternet.com](mailto:david.irwin13@btinternet.com)

07766 135068

## Whatever the Weather May Be, Says He

Whatever the weather may be,  
It's the songs ye sing, an the smiles ye wear,  
That's amaking the sun shine everywhere;  
An' the world of gloom is a world of glee,  
Wid the bird in the bush, an the bud in the tree  
An' the fruit on the stim o' the bough," says he  
Whatever the weather may be," says he-  
Whatever the weather may be!"

James Whitcomb Riley



## Table Tennis 7-9pm

### 1st Tuesday of the month

Little Birch Village Hall All welcome

7-9pm £3, includes refreshments

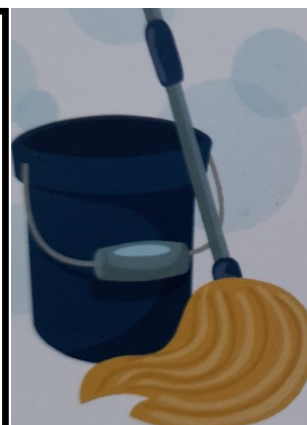
For more information contact Sally

01981 540001 or 07803032928

or email [sally.nichol@btinternet.co.uk](mailto:sally.nichol@btinternet.co.uk)

## Much Birch Facebook Page

It is not just about lost and found cats and dogs, missing deliveries etc. You'll find a wealth of information here



**BCS**  
**Birch cleaning**  
**Services**

Domestic cleaning  
[birchcleaningservices@yahoo.com](mailto:birchcleaningservices@yahoo.com)  
Annette Birch 07787134275

## Ancient Wisdom that Still Rings True Today

Hi Everyone, One of the things that vicars are encouraged to do every day is to say "The Office", in particular Morning Prayer. This takes us back to those monastic founders of Christianity, dating from the 4th Century, who headed out into the deserts of Egypt and elsewhere to reflect on Scripture and pray uninterrupted.

The daily office guides us through the Bible, featuring readings from the Old and New Testaments and the Psalms. Sometimes feast days (or holy days) interrupt the flow, but as we work our way through the Christian year, we find parts of the Bible that are less familiar.

As I write this, the morning prayer set for the day included a reading from the Book of Proverbs. In Chapter 22 verse 16 we find "Oppressing the poor in order to enrich oneself, and giving to the rich, will lead only to loss." It brought me up short. Here is something that is at least 3000 years old, speaking directly to us today! We know, and the stats show, that the rich are getting richer and wealth inequality is increasing in our society and here is an echo of something that was learned many generations ago that resonates with our own time.

Now, I know, that anyone can take a Bible verse out of context and use it to "prove" some point or other but there are also plenty of little gems that we can apply to our own lives to make the world, our neighbourhood and our lives a little better. **Revd Mark**



*Wormelow Hundred  
and South Wye Rural  
Benefices*

## *Living Out Our Faith*

Our new course:

*"Fruitfulness on the Frontline"*

Exploring our faith in the real world.

Tuesdays from 23rd September at  
Much Birch Community Hall  
at 7.30 p.m.

Refreshments will be  
provided.



## Annual Garden Show

What a day it was! After all the rain, the sun shone and the 54 entrants came with their 342 entries and created an amazing floral, vegetable, fruit, domestic and handicraft display. The colours were a sight to behold. The judges were kept very busy and, as usual, performed their task with expertise and professionalism. To them the Club expresses their gratitude.

On the Friday afternoon our young entrants made monsters from vegetables, ably assisted by Janet Gwinnett and Iris Lloyd. These were entered into the Show the next day, along with the rest of the children's entries.

The judges had a hard time deciding which exhibits deserved awards as there were so many worthy entries. If there was a prize for just entering, then everyone would get one – but just by entering everyone is a winner. However, the Hedley family swept the board, with Tim producing 40 entries, and the rest of the family helping to win the Llewelyn Sutton Cup. The Floral Art Shield went to Wendy Fowler; David Enoch Cup to Des Wathen; Domestic Plate to Nichola Salter; The Wilson Cup (Handicraft) to Anne Harper; Jemima Webb won the Children's Shield and over 8 Cup; Fleur Whistance won the Anne Thomas trophy; Jack Hall won the Under 8 cup; Photo Plate was won by Janet Gwinnett and the Painting Plate by Ella Whistance.

The good news is that entries were up by 60% this year – and that is an amazing thing. The newly refurbished Schedule – especially the Domestic section – proved to be popular and opened the classes to many more entrants. It was great to see new faces from the village, plus visitors from other garden clubs joining us.

Thank you to everyone who entered or helped in any way to make the Show the success it was. Now we are looking to next year. Can top 60%? – Put it in your diary now, Saturday 5<sup>th</sup> September. Children's workshop on Friday 4<sup>th</sup> at 4.00pm!

**Lesley Chapman, Show Secretary**

## Flicks in the Sticks

### Much Birch

## The Ballad of Wallis Island

**Thursday 16th October**

**7.30pm**



## **MERRIVALE FARM MILK HUT**

**Selling fresh Organic Milk,  
Milkshakes, Vegetables, Cakes,  
Wagyu Beef and eggs**

**7am- 7pm, Monday to Saturday ,**

**9am to 7pm on Sunday**

**Available directly from our self  
service Farm Shop on the family farm  
where they are produced.**

**Our organic, grass fed Wagyu  
Cross beef has been born and raised  
at Merrivale Farm. The Wagyu breed  
is known for its beautiful marbling  
which gives a delicious flavour and  
texture to the meat. Available in  
mixed boxes starting at £65.**

**Also individual cuts & packs.**

**Contact Lucy for more information on  
07974 053804**

**or email [lucymason@hotmail.com](mailto:lucymason@hotmail.com)**

**Merrivale Farm Little Birch**

**Hereford HR2 8BA**



## **Seasoned Apple Logs for Sale**

**£40 for a barrow bag**

**Please phone Robin Haig  
on 07817 587442**



## **Little Birch Village Hall**

**available for hire for private events.**

**Well appointed kitchen and bar facilities, plenty  
of tables, chairs, crockery, glasses and beautiful  
wooden floor. Parking. [www.birches.news/lbvh](http://www.birches.news/lbvh)  
contact Linda Maden 07849 637242**

## **Hope Spring eCards**

**Anniversaries Birthdays Christmas  
Easter Father's Day Mother's Day  
New Year Valentine's Day**

**Send greetings for any occasion online  
INSTANTLY!**

**[www.HopeSpringCards.co.uk](http://www.HopeSpringCards.co.uk)**

**Read The Birches Newsletter online**

**[www.birches.news](http://www.birches.news)**

**and [www.muchbirchparish.org.uk](http://www.muchbirchparish.org.uk)**



# ALLANGAS

AND OIL

- ▶ Boiler Specialist
- ▶ Landlord Inspections
- ▶ Heating Installations
- ▶ All aspects of domestic gas
- ▶ LPG and plumbing
- ▶ Ex British Gas Engineer
- ▶ Over 30 years experience
- ▶ Oil Installation and Servicing

**T: 01432 840491**

**M: 07761 646635**

**E: [allangas@btinternet.com](mailto:allangas@btinternet.com)**

**Steven Allan**



Oftec Reg No: C12495 Gas Safe Reg No: 188939

## Art and Craft Space

Have an Art and Craft afternoon away from the hustle and bustle of life every Thursday at Little Birch village hall! 2-4.30pm. Bring your WiP or PhD in whatever Art or Craft you are working on - or start something new. £3 per session includes refreshments. For more information contact Sally 01981 540001 or 07803032928 or email [sally.nichol@btinternet.co.uk](mailto:sally.nichol@btinternet.co.uk) All welcome



## The Jolly Gardener

[TheJollyGardener2502@gmail.com](mailto:TheJollyGardener2502@gmail.com)

Kyle - 07850921889



- \* Senior Citizen Discount & Free Quotations
- \* General Garden Duties
- \* Small Landscaping Projects
- Specialising in Patios and Stone Walling

## Much Birch Old Charities

This charity was created over 100 years ago to be of benefit to those living in the Parish of Much Birch. The objectives of the charity are to help children, young adults or the elderly with a one-off grant.

Please contact Rev Mark Johnson on [revmark100@yahoo.co.uk](mailto:revmark100@yahoo.co.uk) to apply for the application form.



**WHERE STUDENTS BECOME MUSICIANS**

## Professional Music Teacher

**Ideal for beginners of all ages**  
**One to one lessons**  
**Online lessons available**  
**Learn the songs you love**

**07976 215694**

**Uplands, Barrack Hill, Little Birch**  
**[www.rickhampton.co.uk](http://www.rickhampton.co.uk)**

## PJ Chapman Electrical Limited

Fully qualified electrical engineer and certified NICEIC Domestic Installer.

Installation work and fault finding.

**Paul Chapman 07879 694922**

**01981 540842**

**[paul22chapman@gmail.com](mailto:paul22chapman@gmail.com)**

## Much Birch Parish Council Meeting

At the Much Birch Parish Council Meeting held in Much Birch Community Hall on the 4<sup>th</sup> September from 7.30pm the parish council discussed some issues with residents concerning Parish Lane. The Ward Councillor was in attendance at the meeting and she updated councillors regarding investment into flood risk matters around the county. There were no further planning applications for discussion at the meeting, but there was an architect at the meeting who had some proposals for a revised planning application to be submitted for new houses at Court Farm.

The dates for the forthcoming meetings, in the year 2025, are advised as follows: October 2<sup>nd</sup>, November 6<sup>th</sup>, December 4<sup>th</sup>. The next ordinary Parish Council Meeting of Much Birch Parish Council will be held on **Thursday 2<sup>nd</sup> October 2025 from 7.30pm** at Much Birch Community Hall.

All are welcome. Please see notice boards and the website for agendas. As always the public and press are more than welcome to attend the meeting and will have the opportunity to speak directly to their representatives. at <https://www.facebook.com/groups/Much.Birch.Parish>

## Your Much Birch Parish Councillors

**Cllr Alison Cook (Chair)** Jasmine Cottage, Wrigglebrook Lane, Kingsthorpe, Hereford, HR2 8AW,  
email: thecooks@wyenet.co.uk Tel. 01981 540703

**Cllr Roisin Burge** The Old Hall, Barrack Hill, Little Birch  
HR2 8AX email: roisinburge@hotmail.com  
Tel. 01981 540724

**Cllr Chris Pickering-Grey** 4 Court Farm Barns, Much Birch  
HR2 8HT chris@pickering-grey.uk Tel. 07712 813218

**Cllr Michael Agyeman** Little Willow, Wrigglebrook,  
Kingsthorpe, Hereford, HR2 8AU  
email: magyeman92@gmail.com Tel. 01981 540840

**Cllr David Irwin** David.Irwin13@btinternet.com  
Tel. 07766 135068

**Cllr Steve Turner** The Underhills, Hollybush Lane, Much Birch,  
Hereford, HR2 8HX, Tel. 07768 206296  
email: turnersofcrossways@btinternet.com

**Dates for the forthcoming meetings are advised as follows:**  
October 2<sup>nd</sup>, November 6<sup>th</sup>, Dec 4<sup>th</sup>.

**Clerk: Mrs Alison Wright: muchbirchclerk@gmail.com**

**Much Birch Footpath Officer:** David Irwin on  
MBfootpaths@btinternet.com Tel. 07766 135068  
Full minutes of the meetings etc. can be found on the Parish  
Council website following the link-  
**[www.muchbirchparish.org.uk](http://www.muchbirchparish.org.uk)**.

You can also find us on X (formerly known as Twitter)  
at <https://twitter.com/MuchBirchPC> and Facebook  
at <https://www.facebook.com/groups/Much.Birch.Parish>

## Jobs for the Garden in October

The rain has arrived in short, sharp bursts accompanied by the odd clap of thunder. Within a week we have seen acres of brown grassland burst back to life and provide livestock with much needed grass to eat.

Our lawns have done the same and the grass is growing rapidly and we now find ourselves waiting for it to dry sufficiently to get the mower out and give it a trim. Our onion crop was harvested well before it started raining and has been drying on the staging in the greenhouse (although it did not need much of that following the hot Summer).

The last of the main crop potatoes were lifted and stored a day or so before the rain began. I had reasonable success in the horticultural show, certainly better than expected, particularly as the runner beans and sweet peas had gone over and leeks and parsnips had nowhere near sufficient growth to justify entry. You can only show what grows. Still there's always next year!

## Jobs to do in October

\*Alpine troughs will benefit from being placed under cover or against a wall in rain shadow away from prevailing wind.

\*Check that greenhouse heaters are in good working order (in case we have a winter!!).

\*Remove saucers from under containers and pots and raise them off the ground with 'pot feet' or wood batons.

\*It is a good time to lift and divide large clumps of perennials.

\*Lift and store dahlia tubers when foliage dies off or is blackened by frost.

\*Mist house plants.

\*Remove larger figs which are unlikely to ripen leaving only pea sized fruit. Protect these from frost to ripen next year.

\*Harvest main crop potatoes (if not already done), pumpkins and marrows.

\*Keep harvesting apples, pears and grapes.

\*In sheltered plots sow broad beans at end of the month. They must be hardy, eg the Sutton or aquadulce.

\*Divide rhubarb.

\*Plant garlic and spring cabbage plants.

\*Drain and roll up hosepipes.

\*Continue to feed birds and provide fresh water.

\*Chop up windfall apples and pears and place on bird table(s)

\*Remove fruit nets. If you have a fruit cage, remove the 'roof' net just in case we have snow.

\*Remove excess fallen leaves from ponds to prevent the buildup of too much decaying organic material in the water.

\*Clean out and re-hang nesting boxes

**Derek Scrivens**



## Much Birch September Parish Walk



On a wet blustery Sunday in September, six hardy souls and one dog ventured out on the footpaths. Before we had gone a mile, the dog had had enough and wanted to go back. so five hardy souls battled the weather over the fields to Athelstan wood. Even the cows were not interested in us as the heavens poured down. We did get some respite walking under the redwoods but the paths were slippery with the recent rain. Emerging at Little Birch Church we reflected on the "Walkers are welcome" sign but thought better in our sodden state and pressed on down the Herefordshire Trail. We passed many of the new gates that have been built around our footpaths before we got back to the Hall to enjoy a fabulous cream tea.. There were scones a plenty so we could try both the Devon and the Cornish way.

David Irwin Much Birch Footpath Officer

# P A Williams GARDEN & PROPERTY CARE

*A Friendly Service, Qualified & Insured*

- Lawn Mowing & Hedge Cutting
- Weed Control Spraying
- Garden Maintenance & Pruning
- Chainsaw Work & Jet Washing
- Rotavating & Painting
- Gutter Clearing & Tidy Ups
- General Repairs & More

**The  
Gardeners  
Guild™**

COLLECTIVE MARK

**QUALIFIED  
GARDENER**



# 07930 905 888

pawgardens@outlook.com

## Services in October

Sunday 5th, 16th Sunday after Trinity

9.15 a.m. at Much Dewchurch – Holy Communion

Sunday 12th, 17th Sunday after Trinity

11.00 a.m. at Little Birch – Holy Communion

9.15 a.m. at Much Birch- Holy Communion

3.00 p.m. at Little Birch – Harvest Festival with  
Revd Sheila Anthony

(Little Birch Resident and Rural Dean)

Sunday 19th, 18th Sunday after Trinity

9.15 a.m. at Much Birch – Morning Worship

11.00 a.m. at Little Birch – Holy Communion  
in Traditional Language

Thursday 23rd

6.30 p.m. at Much Birch – Harvest Festival  
with Much Birch School Choir

Sunday 28th – Last Sunday after Trinity

9.15 am. At Llandinabo – Holy Communion in  
Traditional Language

## Diary Dates October 2025

|                               |            |
|-------------------------------|------------|
| <b>Murder Mystery Night</b>   | <b>p1</b>  |
| <b>Bingo</b>                  | <b>p1</b>  |
| <b>Faure Requiem</b>          | <b>P1</b>  |
| <b>Birches Community Quiz</b> | <b>p2</b>  |
| <b>Bowls</b>                  | <b>p2</b>  |
| <b>Coffee &amp; Books</b>     | <b>p2</b>  |
| <b>Photography group</b>      | <b>p2</b>  |
| <b>Table Tennis</b>           | <b>p6</b>  |
| <b>Church Services</b>        | <b>p11</b> |



### Advertising Rates

11 editions per year (no August newsletter)

1/16 page £4.20 per issue or £42 per year

1/8<sup>th</sup> page £4.80 per issue or £48 per year

¼ page £5.40 per issue or £54 per year

½ page £9.60 per issue or £96 per year

Payment by BACS through Santander

Account Name **Little Birch Village Hall**

Sort Code **09-01-54** A/C No. **65493289**

**Put your business name as reference**

### Defibrillator Locations

#### IN A LIFE THREATENING EMERGENCY CALL 999

AEDs available to use locally for those experiencing sudden cardiac arrest. A defibrillator is an easy to use, medical device that analyses the heart's rhythm and, if needed, delivers an electrical shock (defibrillation) to help the heart establish an effective rhythm.

**Allensmore** Locks Garage

**Backney** on the garage wall at Market Gardens Cottage

**Bridstow** on the outside of the village hall

**Garway** on the wall outside the Garway Moon pub

**Harewood End** at Harewood End Inn on outside of the pub at the back in the beer garden.

**Little Birch** on the outside of the village hall

**Llanwarne** on the wall by steps leading up to the village hall

**Much Birch** on the outside of the church hall

**Much Birch Axe & Cleaver** on the side of the pub

**Much Dewchurch** outside Steiner School, first building after the church

**Peterstow** at the Yew Tree pub

**Sellack** on the outside of the parish hall  
(key code needed)

**St Weonards** old BT phone box off the A466  
between the church and Forge Cottage

**Wormelow** at the Cricket Club & Carrot & Wine shop

**Wilton** on wall at the BP garage on the roundabout



MuchBirchslow  
flowyoga

Join us for

## SLOW FLOW YOGA

Improve  
strength and  
flexibility & also  
benefit from the  
Relaxation

Tuesdays  
6:00- 7:00 PM  
at Much Birch  
Village Hall

**£8 for  
drop in**

**£35  
for 5  
passes**



A calming flowing yoga class with  
time for relaxation.

Suitable for beginners to more  
experienced yogis. You can gain flexibility,  
strength and a sense of relaxation in this  
welcoming yoga session.

For Booking: Follow  
QR code  
Or email:  
Evenstaryogahfd@  
gmail.com



More Information: Tel Arwen on 07503 199 972











