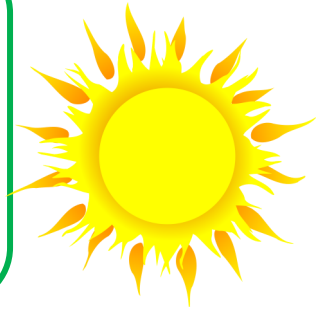


# The Birches

Community Matters Newsletter

Kingsthorpe, Much Birch, Little Birch,  
Aconbury & Wormelwold July & August 2023



## Little Birch Village Hall CURRY NIGHT WITH LIVE MUSIC FRIDAY 25 AUGUST 2023 7pm



Admission

£5<sub>pp</sub>

LICENCED BAR

Please note the bar is  
cash only

Follow

Little Birch Parish Group



LITTLE BIRCH

## FAMILY FETE & FUN DAY

Saturday 15th July - 2pm

Castle Nibole Farm

Just off Barrack Hill towards the Castle Inn

Bouncy castle, games, crafts, afternoon-teas, strawberries & cream, plant stall, music, bottle stall, welly wanging, hot dogs and much much more.



Donations for stalls would be much appreciated.

Contact John Caton 01981 540415

All proceeds to Little Birch Church





# Violette Szabo Open Day

Sunday 9th July from 1.30pm

The Violet Szabo Museum  
Cartef House, Tump Lane, Wormelow HR28HN

Bring a picnic

The Speaker will be Peter Lantos who was deported with his parents from Hungary to Bergen-Belsen concentration camp in 1944 at the age of 5. His father died of starvation but he and his mother survived, but after the camp was liberated they were handed over to the Russians, eventually escaping and returning to Hungary. He wrote about his experience in his book, *Parallel Lines*.



Rosemary Rigby, founder of the Voplette Szabo Museum with the shield presented to her by RAF Squadron 7006 when they named their Squadron Corinne, a code name used by Violette.

## Kings Thorn and Little Birch Gardening Club

### Annual Open Horticultural Show

Saturday 2<sup>nd</sup> September

Little Birch Village Hall

Children's classes, Domestic, Art and Photography, Handicrafts, Vegetables, Fruit, Flowers, Floral Art, Home-made cakes, and much more

Have some fun entering and competing with the things you have enjoyed growing in your gardens. We don't take it too seriously.

Or just come along and see what other people have entered – it's always a good afternoon out enjoyed by all.

Schedules available from the newsletter and Pengethley Garden Centre

Enquiries to Lesley Chapman 01981 541370



## Food for Thought – “Talk with the Animals” by Revd Mark

Dr Doolittle, the man at the centre of the story, has the ability to communicate with the animals. In 2023, you may have seen that people are working on animal communications. There have been a number of viral stories and serious news pieces about understanding your cat’s meow, what your dog is saying etc. One of the really interesting areas is about whales. We know whales communicate across long distances, and that pods of whales of the same species have different accents when communicating. People are starting to use AI (artificial intelligence) to try and see if they can translate these clicks and whistles and rumbles into a meaningful dialogue. If so, it will be a bit of a game-changer. What were considered nothing but “dumb” animals may show that they can have a grammar and a language, which makes them more like us that we were prepared to admit.

In the Bible, especially in the Old Testament, there are many references to the Leviathan – a creature that lives in the depths of the ocean, that plays for the fun of it’s own creation. It is also, in the eyes of the writer of the Psalms, not only an indication of the creative power of God who made it but also a bit of a threat, an agent of chaos in an otherwise ordered world—though, of course the Israelite people were never ones to sail the sea. They preferred dry land!

If we do determine that whales, and possibly dolphins and porpoises, are sentient, then that will change our relationship with them. They are not only to be protected, but cherished, they have an intrinsic value that is greater than we thought – just look at the way we have changed from hunting them for their oil to trying to protect them. They are part of God’s rich creation and, as such, deserve to flourish – requiring us to look after their environment more than we currently do.

### Church Services for July & August 2023

<b>Sunday 2<sup>nd</sup> July (4<sup>th</sup> Sunday after Trinity)</b>	Little Birch Church at 11.00 a.m. – Holy Communion
<b>Sunday 9<sup>th</sup> July (5<sup>th</sup> Sunday after Trinity)</b>	Much Birch at 9.15 a.m. – Holy Communion Little Birch Church at 11.00 a.m. – Morning Worship Llanwarne Church at 6.30 p.m. – Evensong to celebrate 10 years of the restoration of the 16 <sup>th</sup> C glass roundels
<b>Sunday 16<sup>th</sup> July (6<sup>th</sup> Sunday after Trinity)</b>	Much Birch Church at 9.15 a.m. – Morning Worship Little Birch Church at 11.00 a.m. – Holy Communion in Traditional Language Holme Lacy Church at 6.30 p.m. – Evensong (first Sunday service since 2019)
<b>Sunday 23<sup>rd</sup> July (7<sup>th</sup> Sunday after Trinity)</b>	Llandinabo Church at 9.15 a.m. – Holy Communion in Traditional Language
<b>Sunday 30<sup>th</sup> July (8<sup>th</sup> Sunday after Trinity)</b>	Llandinabo Church at 10.30 a.m. – Benefice Holy Communion in Traditional Language
<b>Sunday 6<sup>th</sup> August (Transfiguration)</b>	Little Birch Church at 11.00 a.m. - Holy Communion
<b>Sunday 13<sup>th</sup> August (10<sup>th</sup> Sunday after Trinity)</b>	Much Birch Church at 9.15 a.m - Holy Communion Little Birch Church at 11.00 a.m. - Morning Worship
<b>Sunday 20<sup>th</sup> August (11<sup>th</sup> Sunday after Trinity)</b>	Much Birch Church at 9.15 a.m. - Morning Worship Little Birch Church at 11.00 a.m. - Holy Communion in Traditional Language
<b>Sunday 27<sup>th</sup> August (12<sup>th</sup> Sunday after Trinity)</b>	Llandinabo Church at 9.15 a.m. - Holy Communion in Traditional Language

## History and Sale of The Poor's Acre

The Parliamentary Returns dated 1786 state that an unknown donor gave, by word of mouth only, a parcel of land which was vested in the Overseers of the Parish of Much Birch, who subsequently let the land. The one acre of land was known as the Poor's Acre and is situated on the North side of Hollybush Lane, Much Birch.

The administration of the Poor's Acre passed from the overseers to the Much Birch Parish Council when it was established in about 1895. When the Charity Commission was formed about 1963, the Poor's Acre became part of three linked charities, the Joseph Cooke Charity, the Poor's Acre Charity and the Margaret Drew's Charity, known by the working name of the Much Birch Old Charity.

Rent records show that the Poor's Acre has been let to the occupiers of Bigglestone Farm from 1964 and probably a great deal longer.

The Charity Commission states that the Much Birch Old Charities objectives are for the Relief of Poverty, helping Children/Young People, Elderly/Old people, Other Charities and Voluntary Bodies by making grants to individuals and organisations.

In 2015 the present Trustees consulted with Herefordshire Council Planning Officer for the area and were told that under the revised planning rules, permission could probably be obtained for one house along the roadside of the Poor's Acre. A solicitor and land agent were appointed and outline planning permission for a dwelling was granted.

After protracted negotiations with the tenant and assorted buyers, the building plot was finally sold on 26<sup>th</sup> April 2023. The net sale proceeds after paying the high solicitors' fees, land agent's commission and compensation of loss of agricultural tenancy was £122,757.

This money is being invested in accordance with the Charity Commission requirements and also made available for charitable purposes as detailed above. As the land was given for the benefit of the residents of Much Birch, the trustees consider that donations should continue to be for the benefit of people living in the parish of Much Birch, including Kingsthorpe.

### **Much Birch Old Charities**

(Joseph Cooke Charity Number 215660)

**Trustees: Dick Brimacombe Tel: 01981 540677**

**Revd. Mark Johnson Tel: 01981 540390**



## Little Birch Wildlife Walk 4<sup>th</sup> June

Just under 30 people gathered at Little Birch Village Hall on a lovely sunny afternoon to go on a guided walk, led by Andrew Nixon who has had a long career working in Conservation. We first walked down Chapel Pitch, where we stopped several times for Andrew to point out lots of different wild flowers. He explained how to recognise variations in the same species, who knew there were so many different species of buttercups? I didn't.

He also explained to us that with global warming biodiversity is changing very rapidly for every 2° average change in temperature plants need to be 400 miles further north. This is completely changing the plant species we see.

We walked down through Athelstan Wood and Andrew pointed out sweet chestnut trees that have been damaged by squirrels and newly planted trees have been coated with something to stop them being palatable for deer, which means the plastic tree protectors are not required.

This was a fascinating walk, and we are very grateful to Andrew for sharing his knowledge with us, and Angela Middleton for organising the walk.

We are hoping to organise another Themed Parish Walk in the autumn the date will be posted as soon as it has been arranged.

**Chris Fowler**



## SOUTH HEREFORD REPAIR CAFÉ AT DINEDOR VILLAGE HALL



### They Didn't Bin It! We Repaired It!

We had a very successful "soft opening" on 15<sup>th</sup> April and now will open on the **third Saturday of each month** (except in August and December) from 10:00am to 12:30pm. Repairs on the 15th included a Dyson vacuum cleaner, a standard lamp, and a ceramic ornament, while a family-valued video cassette jammed in a player was extracted. Jeans zips were replaced, the sleeves of a fleece jacket shortened, and the button on a trouser waistband eased. Several pairs of secateurs, shears, and loppers were sharpened as well as kitchen knives and an axe.

We throw away vast amounts of stuff! Even things with almost nothing wrong which might get a new lease of life with a simple repair. That is why we are here to help, and why we shall be very pleased to see you in Dinedor on **20<sup>th</sup> May** or at a later session.

To hopefully ensure a smooth flow of repairs we request that all items for repair are booked in with us in advance with items for Saturday 20th May **BOOKED BY THURSDAY 18TH MAY AT** [www.repaircafesouthhereford.org.uk](http://www.repaircafesouthhereford.org.uk)

While you are waiting for your repair you can also enjoy tea, coffee and cake in our café!

*Dinedor Village Hall is easy to find. Leaving Rotherwas on the B4399 for Holme Lacy after 1 mile turn right and then you will find us after 400 metres on the left. Post code: HR2 6LQ. What3words: ///overcomes.remake.newspaper.*

We are **STILL RECRUITING VOLUNTEERS** for our Repair Café: so if you are handy and able to repair things, or would like to help with refreshments or front-of-house: please do on a Saturday speak to our reception desk or e-mail us at [repaircafe@dinedorvillagehall.org.uk](mailto:repaircafe@dinedorvillagehall.org.uk)



## The Jolly Gardener

[TheJollyGardener2502@gmail.com](mailto:TheJollyGardener2502@gmail.com)

Kyle - 07850921889



\* Senior Citizen Discount & Free Quotations  
\* General Garden Duties  
\* Small Landscaping Projects  
Specialising in Patios and Stone Walling

## Mabe's

will look after your property  
repairs improvements renovations  
landscaping  
general garden maintenance

**Oliver - 07780 718736**



**WHERE STUDENTS BECOME MUSICIANS**

## Professional Music Teacher

**Ideal for beginners of all ages**

**One to one lessons**

**Online lessons available**

**Learn the songs you love**

# 07976 215694

**Uplands, Barrack Hill, Little Birch**

**[www.rickhampton.co.uk](http://www.rickhampton.co.uk)**

*eve lomas*  
*therapies*



Nutritional Therapy  
Acupuncture  
Tui Na Massage

**EASE TENSION**



**RELIEVE PAIN**



**RESTORE BALANCE**

A wide range of physical and emotional complaints addressed

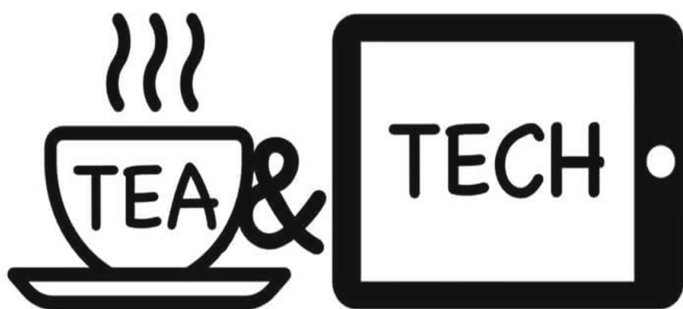
Local therapist working from Garway, Orcop and surrounding areas

[info@evelomasterapies.co.uk](mailto:info@evelomasterapies.co.uk)  
facebook: eve lomas therapies  
07966052354

Beginners class  
 Little Dewchurch  
 Wednesday 8pm  
 Starting 26<sup>th</sup> April

# Pilates with Alison Allan

My number: 07947 011707  
 Email: alisonpilates2016@gmail.com



**Holistic I.T. Support for Senior Surfers**  
[www.teaandtech.co.uk](http://www.teaandtech.co.uk)  
<https://www.facebook.com/TeaTech>  
[richard@teaandtech.co.uk](mailto:richard@teaandtech.co.uk)  
 07739953864

I'm Richard, and I offer IT tech support around rural Hereford. I have 25 years' experience of working within technology, supporting a vast range of people, from technophobes to technogeeks!

I aim to specifically support the more senior users within our community, who often appreciate a completely different approach. I won't burden anyone with jargon and will offer only gentle and compassionate support. This can help the user feel more comfortable with tackling technology and lead to a growing confidence. Sometimes, the tech issue might be the initial reason for contact and all that's really required is someone to sit patiently and share a cuppa. I can do that too, I'm a great listener!

I can support you with many problems (here's a sample):

- General tips and advice
- Fault finding
- Software support
- New PC Installation / Setup
- Virus & Malware Removal
- Email Troubleshooting & Setup
- Broadband Internet & Router Setup
- Wi-Fi Range Issues
- Software Installation
- Windows Reinstall / Refresh
- Slow Computer Clean-up
- Printer Installation / Troubleshooting
- Backup Advice & Solutions
- Solid State Drive (SSD) Upgrades
- Data Recovery
- Laptop Battery Replacement
- PC & Laptop Upgrades & Advice

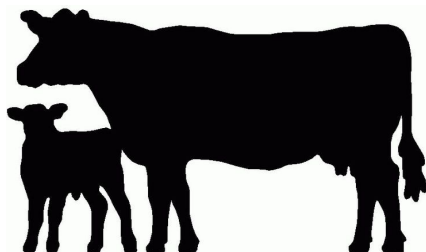
If you need a friendly chat over a cuppa, while I sort out your IT issues, please get in touch using the info above.

## MERRIVALE FARM MILK HUT

Selling fresh Organic Milk,  
Milkshakes, Vegetables, Cakes,  
Wagyu Beef and eggs  
open 7am to 7pm Monday to  
Saturday, 9am to 7pm on Sunday  
Available directly from our self  
service Farm Shop on the family  
farm where they are produced.

Our organic, grass fed Wagyu Cross  
beef has been born and raised at  
Merrivale Farm. The Wagyu breed  
is known for its beautiful marbling  
which gives a delicious flavour and  
texture to the meat. Available in  
mixed boxes starting at £65. Also  
individual cuts & packs.

Contact Lucy for more information  
on 07974 053804  
or email [lucymason@hotmail.com](mailto:lucymason@hotmail.com)  
Merrivale Farm Little Birch  
Hereford HR2 8BA



Items for September newsletter to  
[editorial@birchesnews.org.uk](mailto:editorial@birchesnews.org.uk) or paper  
copy to Elisabeth Taylor 07854 629193 by

**14th August**

## Ping's Hairdressing & Barbers



Experienced hairdresser and stylist  
located in own salon at Thorn Lodge,  
Aconbury Close (old Post Office site).  
Home visits can also be arranged.  
Weekend and evening appointments  
available. Reasonable rates. Fully  
C&G and NVQ certified. For appoint-  
ments and further information  
phone Mobile 07450 343454  
Or Home 01981 540876

# ALLANGAS

AND OIL

- ▶ Boiler Specialist
- ▶ Landlord Inspections
- ▶ Heating Installations
- ▶ All aspects of domestic gas
- ▶ LPG and plumbing
- ▶ Ex British Gas Engineer
- ▶ Over 30 years experience
- ▶ Oil Installation and Servicing

**T: 01432 840491**

**M: 07761 646635**

**E: [allangas@btinternet.com](mailto:allangas@btinternet.com)**

**Steven Allan**



Oftec Reg No: C12495 Gas Safe Reg No: 188939



## Much Birch Parish Council

At the Much Birch Parish Council Meeting held in Much Birch Community Hall on the 8<sup>th</sup> June 2023 the Parish Council co-opted a new parish councillor, Mr Michael Agyeman. The Parish Council discussed, and agreed to comments in regard to a local planning application: Planning Consultation 231114 - Land at The Old Post Office, Wormelow, Herefordshire this being for outline planning for the erection of 2 semi-detached dwellings with revised vehicular access and parking. The Parish Council resolved to register their objection to the proposals, primarily on the grounds of highway safety.

The dates for the forthcoming meetings, in 2023, are July 6<sup>th</sup>, no August meeting, Sept 7<sup>th</sup>, Oct 5<sup>th</sup>, Nov 9<sup>th</sup>, Dec 7<sup>th</sup>. The next Parish Council Meeting of the Much Birch Parish Council will be held on **Thursday 6<sup>th</sup> July 2023 from 7.30pm** at the Much Birch Community Hall. All are welcome to attend. Please see notice boards and website for agendas. As always the public and press are more than welcome to attend the meeting and will have the opportunity to speak directly to their representatives.

### Much Birch Parish Councillors

**Cllr Alison Cook** (Chair) Jasmine Cottage, Wrigglebrook Lane, Kingsthorpe HR2 8AW, [thecooks@wyenet.co.uk](mailto:thecooks@wyenet.co.uk)  
01981 540703

**Cllr Andrew Crum** Tan-y-coed, Barrack Hill, Kingsthorpe, HR2 8AX, [a.crum@btinternet.com](mailto:a.crum@btinternet.com) 01981 540002

**Cllr Roisin Burge** The Old Hall, Barrack Hill, Little Birch HR2 8AX  
[roisinburge@hotmail.com](mailto:roisinburge@hotmail.com) 01981 540724

**Cllr Chris Pickering-Grey** 4 Court Farm Barns, Much Birch HR28HT [chris@pickering-grey.uk](mailto:chris@pickering-grey.uk) 07712 813218

**Cllr Joseph Goldsmith** Quantock House, Hollybush Lane, Much Birch, HR2 8HX [josephagoldsmith@hotmail.com](mailto:josephagoldsmith@hotmail.com)  
07967 728590

**Michael Ageman** Little Willow, Wrigglebrook, Kingsthorpe HR2 8AU 01981 540840

**Parish Clerk Mrs Alison Wright** Longfield House, Gooses Foot, Kingsthorpe HR2 9NE [muchbirchclerk@gmail.com](mailto:muchbirchclerk@gmail.com)  
01981 250860

### Footpath Officers

If you have any queries about footpaths, contact:

**Little Birch and Aconbury: Chris Fowler**  
[chrisfowler1@hotmail.co.uk](mailto:chrisfowler1@hotmail.co.uk) 07931 292998

**Much Birch including Kingsthorpe: David Irwin**  
[david.irwin13@btinternet.com](mailto:david.irwin13@btinternet.com) 07766 135068



Little Birch Family Fete and Fun Day donations of cakes, bottles for the tombola, plants, draw prizes and books very welcome Tel. 01981540415, John Caton.

### Little Birch Parish Councillors

Cllr Michael Davies, chair

Cllr Chris Atkinson

Cllr Nick Deacon

Neil Barrington, clerk [lbpcclerk@gmail.com](mailto:lbpcclerk@gmail.com)

Website [www.littlebirchparishcouncil.org](http://www.littlebirchparishcouncil.org)

## LUKE ATKINSON PHOTOGRAPHY

I AM A PROFESSIONAL PHOTOGRAPHER AND VIDEOGRAPHER BASED IN HEREFORDSHIRE.

SINCE I CAN REMEMBER I HAVE HAD A FASCINATION TO CAPTURE LIFE AND THE FLEETING MOMENTS CONTAINED WITHIN IT.

AFTER 10 YEARS LIVING AND WORKING PROFESSIONALLY IN LONDON I DECIDED TO MOVE BACK TO THE PICTURESQUE COUNTRYSIDE TOWN IN WHICH I GREW UP. THOUGH BASED IN HEREFORDSHIRE, I AM AVAILABLE FOR WEDDING, EDITORIAL, COMMERCIAL, DOCUMENTARY AND TRAVEL PHOTOGRAPHY WORLDWIDE.

[WWW.LUKEATKINSONPHOTOGRAPHY.COM](http://WWW.LUKEATKINSONPHOTOGRAPHY.COM)

[WWW.CONFETTI-PHOTO.COM](http://WWW.CONFETTI-PHOTO.COM)

[LUKE.ATKINSON@ICLOUD.COM](mailto:LUKE.ATKINSON@ICLOUD.COM)

+44 (0) 7841115403



## **Aconbury Shepherd Huts**



**Our huts are hand built to the highest of standards. Our standard hut includes insulation, double glazing, electrics and decoration**

**Uses include craft room, play house, sleep overs etc.**

**Come and see our display hut or request our new brochure**

**We also build stables, field shelters, garden sheds, play houses, garden features and bespoke gates. Please ring for our dedicated brochure**

**Stephen Turner. The Underhills, Hollybush Lane, Much Birch, Herefordshire. HR2 8HX.**

**Telephone: Office 01981 540090**

## **DECOR SOLUTIONS**

tjsj@me.com

### **Painting & Decorating**

Tim Jones

Tel 01981 540242

Mob 07810 895355

3 Generations of experience, specialising in Painting & Decorating services, General property maintenance duties carried out, Fully insured, Good competitive rates, A high standard of workmanship & customer satisfaction guaranteed.



## **Hereford Microsuction Specialist**

**EAR WAX REMOVAL**

It is very common for ears to become blocked with wax, which leads to discomfort, pain and hearing loss.

Make an appointment and have your ears checked at :-

The Maple Room  
Much Birch Community Centre (next to Drs surgery)  
Hereford  
HR2 8HT

HOME VISITS ALSO AVAILABLE.

CONTACT:-  
Anita Phillips mobile 07930145273

## **Tiddlers, Toddlers & StoryTellers**

@Much Birch Community Hall

A parent, child, and community group  
- All are welcome!

Early years, SEND, and foster care experience available.  
Trained breastfeeding support.

**Every Friday 9:30-11:30**

Free play, interest tables, optional music and movement session, crafts and activities for all ages!

Contact: 07762518925  
tiddlersandtoddlersmuchbirch@gmail.com

**£1 per  
person**

Facebook: Tiddlers, Toddlers, and Story Tellers - Much Birch



## Coffee Morning with Book Exchange

Thursday 6th & Saturday 15th July  
Thursday 3rd & Saturday 19th August  
from 10.00am - 12.00 noon

Little Birch Village Hall

Come and enjoy a cup of tea or coffee, some cake or biscuits. Make new friends or catch up with old friends. Take a book, leave a book, or both. Exchange recommendations for a good read. Families & well behaved dogs welcome.

*Look forward to seeing you*



## Youth at the Summit

I got up the mountain edge,  
and from the top saw the world stretch out—  
cornlands and forest,  
river winding among meadow-flats,  
and right off, like a hem of the sky, the moving sea,  
with snatches of foam,  
and large ships reaching forward, out-bound.

And then I thought no more,  
but my heart leapt to meet the wind,  
and I ran, and I ran.

I felt my legs under me,  
I felt the wind buffet me,  
hit me on the cheek;

the sun shone,  
the bees swept past me singing;  
and I too sang, shouted,  
World, world, I am coming

**Maurice Hewlett**, from Pan and the Young Shepherd



## AVALON TREE SURGERY

WE CARE FOR YOUR TREES

MATTHEW THOMAS  
OVER 10 YEARS EXPERIENCE  
NPTC QUALIFIED  
FULLY INSURED

WWW.AVALONTREESURGERY.CO.UK

07794 569284

ALL ASPECTS OF TREE WORK UNDERTAKEN

**Read Birches Newsletter online**

Email [editorial@birchesnews.org.uk](mailto:editorial@birchesnews.org.uk)

to cancel your paper newsletter

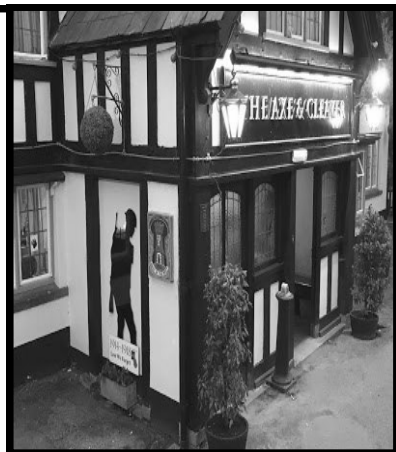
## Hope Spring eCards

Anniversaries Birthdays Christmas  
Easter Father's Day Mother's Day  
New Year Valentine's Day

Send greetings for any occasion online  
**INSTANTLY!**

[www.HopeSpringCards.co.uk](http://www.HopeSpringCards.co.uk)

*The Axe &  
Clever  
Much Birch  
Contact us on  
01981 540203*



*Or on our*

*Facebook page*



## Little Parish Facebook Group

Find the latest news, events and business listings all in one place. You are welcome to promote your local business, advertise a local event or post news or information of interest to the village and surrounding area. Look for *Little Birch Parish Group*



# Jobs for the Garden in July and August

Derek Scrivens



No House Martins again this year, sightings of 2 Swifts and 2 Swallows have been our lot so far this year. What a fantastic performance from what seems to be 3 Cuckoos in the area. Last September I included a photograph of some grass snakes' eggs which I had uncovered when moving some compost. At the time we had not seen a grass snake during the 20+ years that we have lived here. However, at long last, we have had a prolonged sighting. It had got inside the net over an area of brassicas (so covered to keep pigeons off) and could not find a way out. We released it and managed to get a few seconds of video as it disappeared into the hedge. At one point I had it hanging over a stick, but unfortunately it slipped off while we were focusing the iPad camera, and that's when it made its way into the hedge. It was difficult to estimate the length but I would think between 75 and 90 cms. If it has adopted us, it might explain why our tadpoles seem to disappear overnight and the absence of frogs. I wish it would catch the mice that are nicking our strawberries!!

- \*Plant Autumn flowering bulbs – Colchicum, Sternbergia, Nerine.
- \*Clean foliage and remove any dead leaves from house plants.
- \*Regularly dead head flowers to promote new flowers.
- \*Camellias and rhododendrons should be well watered with rain water, particularly those in tubs, to produce next year's flower buds.
- \*Feed tubs and hanging baskets with a high potash feed (tomato feed) every couple of weeks.
- \*Pick sweet peas regularly, ensuring no pods are allowed to grow. Feed with tomato feed weekly and keep soil at the base

- \*Harvest courgettes and beans regularly and also make the most of all young vegetables; lift onions and garlic when foliage starts to turn yellow.
- \*Feed tomatoes, peppers and melons with high potash fertilizer and cucumbers with nitrogen feed.
- \*Cover brassicas with a fine mesh to protect them from caterpillars.
- \*Take semi-ripe cuttings from herbs such as rosemary, sage and thyme.
- \*Cut canes of summer fruiting raspberries to the ground. Select 6 to 8 strong, new green canes at each root and tie them to the wire supports 10cm apart, then cut out all the others.
- Apples, pears and plums may well have dropped some fruit in June. If the crop is still heavy, thin by hand to improve the crop.
- \*Make new strawberry beds.
- \*Ensure frogs, toads, newts and other animals are able to exit ponds.
- \*Allow some seed heads and berries to develop for wild-life.
- \*Do not destroy wasp nests unless their location is dangerous to you.
- \*Sow biennial plant seed now – foxgloves, teasels, wallflowers – these will flower early next year and will help feed pollinators.
- \*Don't water lawns in hot dry periods.
- \*If there is evidence of hedgehogs visiting your garden leave out a little meat (not fish) based pet food for them
- \*Sit back and enjoy your garden when weather permits. BBQ plus veg. from your garden is great.

## Gardening Club News

Our May meeting was 'The History of Birmingham Botanical Gardens'. Our speaker Philip Aubury had been director of the Garden after working his way through the ranks following his initial horticultural training. His talk was fascinating as he explained how the Garden had developed.

He had many amusing anecdotes and memories including showing Bill Clinton around the garden after he had sneaked out of a major world conference. He then took us on a virtual tour of the garden leaving all of us wanting to see more. It is many years since the gardening club took a trip to the garden in Birmingham but I suspect quite a few of us have been inspired to visit again.

On June 10<sup>th</sup> we held a coffee morning and plant sale. The home-made cakes were delicious and we were able to sell a wide range of plants to suit the tastes of all, everything from house plants, orchids, vegetable plants, bedding plants, roses, perennials and a whole lot more. Hopefully the sale will become an annual event.



## June Visit

We will be visiting Kentchurch Court on Wednesday 28<sup>th</sup> June. We are due to arrive at 6.30pm and some members may wish to travel directly there. Alternatively, we can meet at Kingsthorpe bus shelter to leave promptly at 5.45pm, we can share cars and reduce cars on the road. The cost will be £7.50 and the café will be open, cash only.

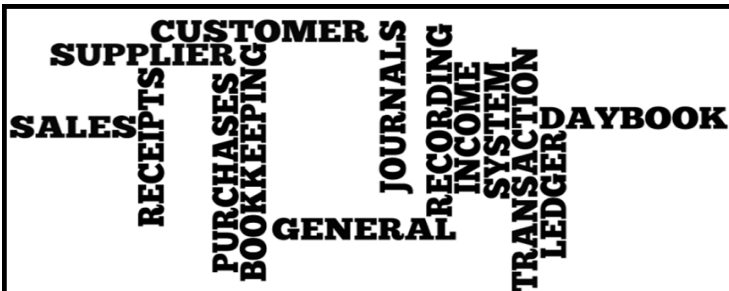
## July Visit

We will be visiting Weston Hall which is a 6 acre garden of walled gardens, ponds, lawns, mature trees and shrubs. More details to follow on this one.

## Annual Horticultural Show

Saturday September 2<sup>nd</sup> – Annual Horticultural Show. Schedules will be emailed to members but will also be available at Pengethley Garden Centre. This is the opportunity to enter whatever you have and enjoy a very special village event. This is an open show which means anyone can enter. There will also be a children's workshop on the Friday afternoon before the show. Time to be confirmed.

Janet Gwinnett



**EJ PARTINGTON BOOKKEEPING**

Bookkeeping & Accounting Specialist

Woodfield, Hollybush Lane, Much Birch, HR2 8HX

07989 854593 / 01981 541109

[emmadeer@hotmail.co.uk](mailto:emmadeer@hotmail.co.uk)

Bookkeeping	VAT Returns
Invoicing	Management Accounts
Payroll	Self-Assessment Returns

**Workshop/Studio Wanted for Rent or Purchase**

Suitable for Light Industrial use with road access, electrics and water/drainage. 1,000-3,000 sq ft. Within 5 miles of Much Birch (ideally). All conditions considered as long as suitable permitted use.

We moved to Kingsthorpe/Much Birch last year and are looking for a suitable space to move our small sustainable business, currently based in Birmingham.

Please email or call [samfoggan@gmail.com](mailto:samfoggan@gmail.com)  
07738904667



Email: [richard@actonbuilding.co.uk](mailto:richard@actonbuilding.co.uk)

Mob: 07863134329

**Local established building company with over 30 years experience**



New builds, extensions, renovations, barn conversions. Projects taken from design to occupation. All works fully guaranteed.

Kitchens and bathroom specialists.

Refurbishment or new installation.

Tiling, wet panels, wet rooms, under floor heating. Design to completion.



We offer a full green energy service, from solar pv, battery storage, car point chargers etc, to air source units, heat pumps new or retro fitted.

Everything accessed and quoted free of charge.

[www.actonbuilding.co.uk](http://www.actonbuilding.co.uk)

Tel: 01989740595



**WALKER'S WALKS AND PET CARE**

~DBS checked, qualified and insured~

I offer stimulating dog walks and enriching pet sitting around Hereford/ Welsh border.

[walkerspetcare@outlook.com](mailto:walkerspetcare@outlook.com)

07842966678

Facebook - @Walker's walks and pet care



## Eric and Doe's Irish Tour

**29th March 2022** Left home at 10.10hrs, arrived at our first camp, the Kendal Club Site at 1500hrs. As with all club sites, this has all the facilities. We are situated in a deciduous wood that was an ammunition factory back in the day. The quite big Kent river is almost surrounding us. As we arrived the first thing I noticed was the bird song.

Set up, a cup of tea and then set off to explore. There is a single span pedestrian bridge over the Kent. We headed south for a few hundred yards, spotted a big house just over the way and went to investigate. We were surprised to see a little village just ahead with the entry to the big house which we learned was now flats.

We met an old wrinkle like ourselves and had a great history lesson from him. There was a bridge that we thought was a railway bridge, a steep climb up proved that it was an old dry Canal. The old boy said it had been dry since the 1940s, because all the males were away at the war and there was no manpower for the maintenance so it was left to go. The big house used to belong to a Quaker family years ago, and was part of the high gentry of the area. Quite a lovely stop over, lots to do, plenty of walks, great swimming pools. Walked 7568 steps, drove 204 mls.

**Wednesday 30th** 1727hrs All us campers know where not to camp, so why did we camp under the trees? It rained, we had little spots and big drips through the night, but, ironically, we both slept well last night.

We commenced our drive to Cairnryan at 0940, up the M6, most of the heavy traffic had filtered off yesterday so the traffic was very light. This morning it's more overcast and quite a bit colder, as we climbed over Shap Fell we could see lots of fresh snow all around. We had flurries of snow off and on all the way to our camp site at Castle Kennedy where we arrived at 1420 hrs. But on the whole we had good weather. We did have to divert into Penrith, mainly to get two new wiper blades and top up with fuel.

Had a lovely drive after leaving the M6 and on to the A75. So much variety of scenery along this route fantastic grassland, lots of rubbish wetland, we drove along very close to the coast. But in all that drive, even though it's a dairy area we hardly saw a cow. Our site was about a mile off the road and seven miles from Cairnryan.

As soon as we arrived, off came the bikes and we headed back to Castle Kennedy only to find they were closed until Friday. Ah well, we had a bit of exercise. Back at our site, we paid £20 for our night's camping. The site has a massive lake on three sides with trout fishing. Doe and I go out again for a walk around the lake but the path was so poor we walked up the road. Lots of horses on the sides. A herd of 20+ inquisitive young steers which came right up to the fence. I can understand why folk are afraid

when confronted in a field. These kept pace with us along the road, almost coming to lick our hands. Another lovely meal by the navigator. We shall now settle down for the night, must be up at six to catch the ferry.

**Thursday 31st** It's now 08.30, just sailing out of Cairnryan on Stena. A bit of a delay because of the extra traffic (P&O ferries impounded). Just a two hour crossing to cover fifty miles. A frost last night, this morning, clear blue skies but very cold and windy. I also found a camp site for tonight, a CL 2195 @Ford Farm Islandmagee, why did I select this? Only because it was on our way. While searching the internet on Doe's phone I learned that last night, tomorrow night and Friday night are excellent for viewing the northern lights, because there has been so much solar activity, so from 1010 till 1035 I was outside on an amazing starry night waiting for it to happen. I would not have minded that we saw no northern lights but I had gone around and told the other two vans of the great expectation!

We had an easy trip out of Belfast, good roads and then onto the brown roads, smaller country roads. We saw just one car. Then I realised that Island Magee was almost an island, crossed the causeway, drove passed our site so drove around the island, some nice beaches at the top end. Checked in, a really nice man in charge, a real character. Cycled down to the causeway, also a bird sanctuary, but the tide was out and not much activity, very cold. All day the sun has shone but cold. We had a cockerel, (Guilleane) hens and bantams around our door. A big day tomorrow as we have booked to walk the Gobbins.

**Friday April 1st** Here we are, still at Ford farm with Mr Hall, a nicer man and character we have never met on any pitch. A lie in for a change. 9.45 we gather to start our trip to walk the Gobbins. Once again the weather is great but still colder with a keen wind. We were about 16 on the trip—a mini bus ferries us up to the start and then we have a 1in4 walk down to the sea, short but sharp.

The walk is basically along the edge of the sea on a man made walk, sometimes very close over the water, on a gantry, steep steps cut into the rock, over bridges, sometimes very hairy. For me the worst was the steps, all of varying height etc. We were out for three hours, walked 3.5 miles or 1200 steps. Sometimes, if the sea is rough, one can get wet from the waves. Today was good.

Needless to say we spent the rest of the day indoors with infrequent showers, also had the heater on.

Mr Hall called around this evening to give us some really good info about where to go and where to stay along with many a yarn about the life he has led. He is 83 and three generations of his family claimed Snowdon last year.

We move on up the coast tomorrow.

*You can read Part 2 of The Irish Tour by Eric Joseph in the September issue of the Birches Newsletter.*

## Diary Dates July/August

**Gardening Club** June & July visits **p11**

**Coffee & Books** 6th&15th July  
3rd&19th Aug **p10**

**Community Café** Sat 8th July MBCH  
10-12.30 **p14**

**MBPC meeting** Thurs 6th July MBCH **p8**

**Violette Szabo Open Day** Sun 9th July 1.30 **p2**

**Little Birch Fete** Sat 15th July 2pm **p1, p8**

**Horticultural Show** Sat 2nd September  
LBVH **p11**

### Weekly Events

**Tiddlers and Toddlers** Fridays 9.30-11.30 MBCH

**Table Tennis** 1st Tuesday 7-9pm LBVH

## Advertising Rates

11 editions per year (no August newsletter)

1/16 page £3.50 per issue or £35 per year

1/8<sup>th</sup> page £4.00 per issue or £40 per year

¼ page £4.50 per issue or £45 per year

½ page £8 per issue or £80 per year

Payment by BACS through Santander

Account Name **Little Birch Village Hall**

Sort Code **09-01-54** A/C No. **65493289**

## Defibrillator Locations

### IN A LIFE THREATENING EMERGENCY CALL 999

AEDs available to use locally for those experiencing sudden cardiac arrest. A defibrillator is an easy to use, medical device that analyses the heart's rhythm and, if needed, delivers an electrical shock (defibrillation) to help the heart establish an effective rhythm.

**Allensmore** Locks Garage

**Backney** on the garage wall at Market Gardens Cottage

**Bridstow** on the outside of the village hall

**Garway** on the wall outside the Garway Moon pub

**Harewood End** at Harewood End Inn on outside of the pub at the back in the beer garden.

**Little Birch** on the outside of the village hall

**Llanwarne** on the wall by steps leading up to the village hall

**Much Birch** on the outside of the church hall

**Much Dewchurch** outside Steiner School, first building after the church

**Peterstow** at the Yew Tree pub

**Sellack** on the outside of the parish hall  
(key code needed)

**St Weonards** old BT phone box off the A466  
between the church and Forge Cottage

**Wormelow** at the Cricket Club & Carrot & Wine shop

**Wilton** on wall at the BP garage on the roundabout

*Join us at the*

# Community Café

## @ Much Birch Community Hall

**Saturday 8 July 2023**

**10:00 - 12:30**

and every 2nd Saturday of the month

**N.B. No Café in August**

**9 September**

**14 October**

For more information or if you are in need of transport contact Lydia on 01981 540323 or [socialfabric@hotmail.com](mailto:socialfabric@hotmail.com)



*A local group who want to bring people together, strengthen community links and provide relaxed and fun events for all ages.*



