



# Newsletter for King's Thorn, The Birches & Aconbury

A newsletter for the villages of King's Thorn, Little Birch, Much Birch & Aconbury.

April 2018. First published 1977..

Come and Join us for a

## Fashion Show

By

Feathers and Frocks of Ross-on-Wye

Supported by

Harts of Monmouth

Lingerie Shop



**Friday 20th**

**April 2018**

Prompt start at  
7.15pm

Much Birch Community Hall

Tickets £9.00

to include wine and canapés

To Reserve Tickets

Ring 01981 540980 or 07787532720

*Proceeds for repairs to Much Birch Church stained glass window*

## Diary Dates

### March 2018

23rd Village Market MBCH

23rd Lent Lunch LBVH

23rd LB Village Quiz LBVH

28th Gardening Club AGM LBVH

### April 2018

2nd Historical Society Longtown

5th Coffee Morning LBVH

6th Quarto LBVH

10th Whist Drive LBVH

17th WI at MBCH

20th Fashion Show MBCH

21st Book Exchange Methodist Chapel

22nd Parish Walk from LBVH

27th Village Market MBCH

### May 2018

12th Coffee Morning MBCH

12th Silver Branch Ceilidh Band.LBVH

18th Talk on Cider and Tasting MBCH

20th Fashion Show MBCH

22nd Flick in the Sticks MBCH

25th Village Market MBCH

## Church Services April 2018

### Easter Day (1<sup>st</sup> April)

Much Birch Holy Communion 9.15 a.m.

Little Birch Holy Communion 11.00 a.m.

### 2<sup>nd</sup> Sunday of Easter (8<sup>th</sup> April)

Much Birch Family Communion 9.15 a.m.

Little Birch Morning Worship 11.00 a.m.

### 3<sup>rd</sup> Sunday of Easter (15<sup>th</sup> April)

Much Birch Communion 9.15 a.m.

Little Birch BCP Communion 9.15 a.m.



### 4<sup>th</sup> Sunday of Easter (22<sup>nd</sup> April)

Much Birch Morning Worship 9.15 a.m.

### 5<sup>th</sup> Sunday of Easter (29<sup>th</sup> April)

Much Birch said Communion 9.15 a.m.

Orcop Village Hall – Celebration of Rogation with bacon  
butties from 9.30 and service at 10.30 a.m., including the  
blessing of gardens, animals, fields and farmers.

Please send copy for the May Newsletter to  
[editorial@birchesnews.org.uk](mailto:editorial@birchesnews.org.uk) or written  
contributions to John Bryant at Bramley Bungalow,  
Aconbury Close, King's Thorn.

—by 18th April please.

## Local News for April 2018.



As reported last month, Anthea Flora Haig sadly passed away aged 91 years. Hill Farm was her home (looking behind the Bus Shelter at King's Thorn, down onto the fine rows of fruit trees across the A 49 and beyond.)

Her funeral Service was held at Much Dewchurch on Feb 19th conducted by Revs. Mark Johnson and Patrick O'Ferrall.

She was born in Surrey at the home of her great uncle, Lord Lugard. At the age of 2 years, she travelled to Kenya, where her parents had bought a coffee plantation, living in 2 or 3 modest mud huts, which made up the living accommodation.

When she left school, it was still wartime and after WW 2 had finished, She decided she would go back to Kenya where she had spent such a happy childhood. She lived with her Uncle Ned and Aunt Hilda, Uncle Ned was a keen botanist and it must have been his influence, that on her return to England in the early '50's that she enrolled at the Waterperry School for Horticulture run by the redoubtable Miss Havergal!. After finishing at Waterperry, she began working as a gardener at the Chantry, in Sevenoaks, Kent, home to a Christian fellowship, called the Blue Pilgrims.

My parents met at a party one day at a party one Christmas in 1954 and were married in Bury St. Edmunds Cathedral in 1955. My father spent a few years in north Germany, where he was stationed, although she enjoyed living in Germany, but what she really wanted was to live in the country and do 'country things' such as creating a garden and perhaps keeping a few animals.

In 1959, Anthea and Richard Haig came to Herefordshire. Dick had trained to be a fruit grower with Capt. Barter at Gorsley. Anthea started off with 2 goats but she could never bear to see them tethered and when the orchards were planted the goats had to go.

Then there was an amusing contrast had been between Maj. Haig's regimented rows of apple trees and Anthea's unplanned and ultra organic garden, where if there was a conflict between tidiness and wildlife, the latter would always come first, unusually for a gardener, she even loved moles and the soil from molehills was just the thing for compost heaps.

Anthea was always full of energy and seldom walked anywhere if she could run.

No Stress, No Worries,

# Glazy Days

- ◆ **CONSERVATORIES**
- ◆ **WINDOWS**
- ◆ **DOORS**
- ◆ **FASCIAS**
- ◆ **SOFFITS**
- ◆ **GUTTERS**

◆ **ALSO MISTED UNITS REPLACED**

**01981 541121**  
**07818 611010**  
**www.glazydays.net**  
**Email: sales@glazydays.net**



### Little Birch & Aconbury Joint Neighbourhood Development Plan

## Draft Plan

The Steering Group would like to thank all those who completed a **Consultation Draft Comments Form**. Our consultant Dr David Nicholson, has reviewed all those comments and is preparing a draft set of responses – including any necessary amendments to the Plan, so that he can give a report at the next **Steering Group Meeting**. This could possibly be in April – but no date has yet been set. As always, everyone will be welcome.

Anyone not yet registered please contact Sophie Glover – Clerk to LB&A Steering Group [littlebirchpcclerk@hotmail.co.uk](mailto:littlebirchpcclerk@hotmail.co.uk) for notifications of future meetings or check out the website – [www.littlebirchparishcouncil.org](http://www.littlebirchparishcouncil.org).

**Aconbury and Little Birch Neighbourhood Development Plan 2011 -2031** then has to go through a number of checks – including an independent examination.

The final stage will be a **Referendum**. A majority of those who vote need to agree with the Plan for it to be finalised and come into use.

She combined a wide-eyed and childlike joy in the world around her with an indefatigable energy and an immense zest for life. I think that one of Robin's abiding memories, was of pushing his mother at high speed through the middle of the Hay Festival to hear a talk by the writer William Dalrymple which started at 1pm. They had already attended an 11am. service at Dewsall so we hadn't left ourselves much leeway and we arrived a few minutes late. Then after the talk had finished, we returned to the car and drove off at high speed to Credenhill as Anthea was keen to go to a concert which was part of the Thomas Traherne Festival held at Credenhill Church. This started at 3pm. and Robin recalls we made it bang on time!

That day was unusually busy even by Anthea's standards, she was often seen scrambling around Herefordshire churches or visits to concerts and Open studios in Hereford Art Week. She was also for many years a member of the Woolhope Club.

The very last outing she went on was at the end of October, 2017. when Robin took her to the house in Surrey where she was born as well as the room where her elder sister Shelagh spent

half their school holidays every year while their parents were abroad' It was fitting that this turned out to be her final expedition in a long and energetic life.

The whole community was shocked to hear of the untimely death of Bill Padden of Fayre View , Much Birch at the age of 72 years. Just below the Much Birch School, is a piece of 'Topiary' depicting a man's head and this looks like a photograph of Bill which was reproduced in the funeral order of service. A full

Requiem Mass was held at Belmont Abbey on TUESDAY , 6th March to celebrate his life. Bill seems to have died of a 'blood disorder and so donations were requested and given to Cancer Research UK. We send to his widow, Tina and family Katherine, William, Mathew and Nancy and their families our sincere condolences. It was good to see them worshipping as a family every Sunday at the Monastery of the Poor Clares.

Sadly, we have to report the passing of our oldest resident Don Austins, at the age of 102 years.

Don was born in Ledbury road in 1916. He never knew his father, who was serving in the Royal Flying Corps and was killed in an opportunist raid on Folkestone 1917.

Don's first school was St. James and from that time, he used to talk about Hereford in the 1920's when shops would stay open till 8 or 9pm especially on Saturdays.

Mr & Mrs Wallis who had a business in Eign street had a model T Ford at a time when cars were rare and Don often talked about the wonder of his first trip in a motorcar when he and his mother went to Hay on Wye in the back of an open car.

He was always a keen supporter of Hereford United from its formation from Hereford City & Hereford Thistles

Don's first job was as an office boy in Foster & Grace Estate Agents. HK, as he was known was secretary of the Three Choirs Festival and Don remembered seeing Sir Edward and George Bernard Shaw. He then moved to be clerk for TA Matthews solicitors.

Don met his wife, Betty, through a group of friends. She worked for Hereford Police CID at that time. They were married in 1940 6 months after being 'called into Service' for WW2, he served in the King's Shropshire Light Infantry mostly in the UK apart from a spell in Italy. At one time he was stationed in Folkestone and at the height of the tension when invasion seemed imminent, he said the entire guardroom had about 25 rounds of ammunition between them. To relieve the boredom of nights on 'watch', he once threw some boulders over the cliffs to see if there would be an explosion as the beach below as it was said to be mined ~fortunately, nothing happened!

After the War, don and Betty moved to Breinton Road then he had a spell as manager of the Danish Bacon Co. in Barrs Court Road. Don and Betty became a family of four with Susan and Christopher and later, Don enjoyed the grandchildren Sue's son Richard and Christopher's children Lucy, Kate, Christie and David.

At home there were beehives and a lot of animals, 50 guinea pigs and rabbits bantams and a pair of tortoises all running free, this brought frequent upsets to Susan and her friend, Dianne when one died, Don with a knack for the ceremonial put his collar on backwards, like a vicar, and held a solemn procession funeral procession.

Don's first car was a 1934 Austin 7 which had to be cranked into life by hand, and had brakes but minimal braking. He said it would do 54 mph and 54 m.p.g.

In 1955, the family moved to Broomy Hill. Some recollections from Sue and Chris's cousin David , who now lives in Canada.....The time when Don is going 100 mph down a single track lane near Hereford in the Jaguar.

Filling the garage with Cornflakes during a visit of the bosses of DBC would not appreciate an overstock of goods for sale.

On the way back from Dulverton to Minehead singing about the elderly vicar in the car behind

*Over the mountains over the Sea  
Where will the parson's Ford Anglia be  
First to the left then to the right  
He'll never be home tomorrow night*

Don went back to being a company rep.. Over the years, he was well liked by customers in refrigeration, air conditioning and oils

Betty sadly died of a stroke whilst on holiday in Jersey in 1980.

He took the lead in several pantomimes in the 1990's and as King Cole, who could forget as he made his grand entrance the lines, Lord and Lady Thomas , *My good neighbours*. Don a was a very good table tennis player in his day as JHB found to his cost as beating Don was a rarity.

He also liked to meet friends at the Pick a Dish cafe on the Rotherwas Estate. Even at 100 + , he would be there correcting their crosswords for them.

He was well known at Tesco in Belmont where he would drive to pick up his daily newspaper and do his shopping every Tuesday.

He only gave up driving in August last year. When he turned 100 they announced it over the tannoy and presented him with a bottle of 'bubbly' at the check out. His good neighbour, Dennis Pritchard then fetched his daily paper and a little shopping.

Mary and Dennis also brought him to the 'Coffee Mornings' at Little Birch Village Hall,

where he enjoyed meeting up with old friends.

Apart from his family Don will be missed by his wide circle of friends from his varied working career - a colourful character who grew up in a completely different era but seemed to adapt to every stage of change that he saw over his very long life and was amazingly active right to the end.

We are also sad to record the death of Klaus Wassenburg of Warren Farm, King's Thorn. Klaus and Nettie were great supporters of this Newsletter and a full tribute to Klaus will be given next Month.

### **Much Birch Village Markets**

The dates for 2017 are as follows:

April 27<sup>th</sup>, May 25<sup>th</sup>, June 22<sup>nd</sup>, July 27<sup>th</sup>, August –no market, September 28<sup>th</sup>, October 26<sup>th</sup>, November 23<sup>rd</sup>, December 14<sup>th</sup>.

### **GARTH BRADBURY FENCING LTD**

**All types of fencing**

**Gates**

**Field Shelters**

**Timber Outbuildings**

**www.gb fencing contractors.com**

**garthbradburyfencing@hotmail.com**

**01981 541385 : 07970 346460**

# Little Birch Village Hall Committee

Newsletter notices for April 2018

## Coffee Morning

The next coffee morning will be on **Thursday 5<sup>th</sup> April 10:30am - 12:30pm** at **Little Birch Village Hall**.

Join us and enjoy a cup of tea or coffee, some cake or a biscuit. Make new friends or catch up with old friends, have a chat and find out more about the local community and let us know your thoughts and suggestions as to how we can develop these regular meetings.

If you need help with transport please contact Margaret: 01981 540374

## Quarto – an evening of song and laughter for all

Travelling folk band Quarto will be at **Little Birch Village Hall** on **Friday 6<sup>th</sup> April** at **7:30pm** for an evening of quality singing and infectious comedy in a relaxed and warm atmosphere. Cheeky but not blue!

Tickets just £10 per person to include supper. To book contact Liz on 01981 540479, Jenny on 01981 541198 or Margaret on 01981 540374

## Whist Drive

We guarantee a warm welcome and a fun evening with good company at our monthly whist drive whatever your ability. Excellent prizes and refreshments too.

Our next **Whist Drive** is on **Tuesday 10<sup>th</sup> April** at Little Birch Village Hall. We start at **7.30 pm** and the entrance fee is just £2.00.

## Community Book Exchange/Lending Library

The next Book Exchange will be on the morning of **Saturday 21<sup>st</sup> April** at the former Methodist Chapel opposite the Village Hall **10am – 12pm**.

All members of the community are invited to join us for this enjoyable monthly event which offers not only a wide range of books and DVDs (to suit all ages and interests) but also an opportunity to meet others and exchange recommendations for a good read.

There is a charge of just £1 per adult towards the cost of the hire and refreshments.

## Advance notice – Ceilidh

Celebrate the arrival of Spring and join us for a fun evening of dancing with the Silver Branch Ceilidh Band and Caller.

At **Little Birch Village Hall** on **Saturday 12th May 7.30pm – 10.30pm**

Bar and snacks available

All welcome (no previous dancing experience necessary)

Tickets £5.00 Children under 12 - £3.00

Tickets available from Linda 01981-540532, Angela 01981-540377 or Julie 01981-541080



**Tuesday 24th April, 7.30 pm - MAUDIE 12**

The true-life tale of arthritic Maudie Dowley (Sally Hawkins). Living with her disapproving aunt in Nova Scotia in the 1930s, she's the proverbial square peg in a round hole — not that that can overcome her indefatigable spirit. After meeting fellow loner Everett (Ethan Hawke), against all odds her life starts to fall into place, including a burgeoning career as a painter.

**Tuesday 22nd May, 7.30 pm -  
GOODBYE CHRISTOPHER ROBIN PG**

**Tickets £4.50 (£3.50 under 16s)**

*Tickets available in advance or on the door - for further info or to book tickets please email [bryonyconnolly@hotmail.com](mailto:bryonyconnolly@hotmail.com) or call 01981 540097*

*For further information about films and screenings visit [www.artsalive.co.uk](http://www.artsalive.co.uk) (online booking available!)*

## **Date for your diaries...**

We have a special Summer film screening on **Saturday 14th July (Bastille Day)** of **LES MISÉRABLES 12A**.

French cheese and wine during the interval is included in the ticket price (£10, £5 children).

This will be a fundraiser for Much Birch Community Hall.



## Much Birch WI

Much Birch WI meets on the third Tuesday of each month in Much Birch Community Hall, just off the A49. The Hall is next door to the surgery and both are signed from the road.

The next meeting will be our open meeting where everybody is welcome. This will be on Tuesday 17<sup>th</sup> April.

We have a talk given by the Hereford Owl Rescue representative all about the rescue owls who will be visiting us as well.

This should be a very interesting and enjoyable evening and we hope many of you will join us.

Visitors and potential new members are always welcome. Please contact Sallie on 01432 340069 for further details.





Live entertainment, in the company of others ...

For something totally different

# Quarto

An evening of song and laughter for all

**LITTLE BIRCH VILLAGE HALL**

**Friday 6th APRIL @ 7.30pm**

**£10 - includes supper**

**TICKETS**  
 Marg - 01981 540374  
 Liz - 07771 925561  
 Jenny - 01981 541198



*What our audiences have said...*

"We didn't know what to expect, but we've never laughed so much!"  
Village Hall Committee

"We've seen you four or five times now and it still seems as fresh and funny as ever."  
School PTA

"Everyone thoroughly enjoyed the evening - you were a great hit! And we raised some money"  
W.I. fund-raiser

*What the media and others might have said....*

"... and such beautiful singing too!"  
Rotary Ladies Night

"What does the future hold for them, we wonder?"  
Clairvoyant Times

"They had me in stitches."  
The Lancet

"Visually stunning!"  
Vogue

"Their future is secure..."  
Football Managers Weekly

"First class! They take some licking."  
Post Office Workers Weekly

"Who?" Her Majesty the Queen upon being told that Quarto were unavailable for the Royal Variety Show.





Designed by Tony Whitley Design, Hull



## CEILIDH

At Little Birch Village Hall  
WITH THE SILVER BRANCH CEILIDH BAND

Saturday 12<sup>th</sup> May  
7.30pm – 10.30pm

Folk Duo, Alana and Alice  
will sing in the interval

Bar and snacks available  
All welcome

Tickets £5.00 Under 12s - £3.00




## St Michael's:

### The story continues.....



St Michael's Hospice  
Always a place of light and love

#### St Michael's Hospice Plant Fair

Friday 4<sup>th</sup> and Saturday 5<sup>th</sup> May 11am-5pm

Bartestree,  
Hereford,  
HR1 4HA

The second annual Plant Fair at St Michael's Hospice will be a celebration of the joy of gardening.

Plant lovers will have the chance to browse a wide range of herbaceous perennials, bedding plants, annuals, trees, shrubs, alpines, bulbs, carnivorous and indoor plants grown by professional and amateur gardeners.

Light refreshments will be available all day on both days.

Two-course lunches will be served between 12pm and 2pm each day, no booking necessary.

St Michael's Hospice would like to thank all our green fingered community supporters who are busy in their gardens and greenhouses growing plants for sale at the Fair.

There is on-site parking at the Hospice, but please car-share if you can.

#### Rachel Entwisle

Communications Assistant

Direct tel 01432 852 655 Fax 01432 851 022

Email [rentwisle@smhospicehereford.org](mailto:rentwisle@smhospicehereford.org)

web [www.st-michaels-hospice.org.uk](http://www.st-michaels-hospice.org.uk)

Improve flexibility, build strength and  
develop control and endurance

# PILATES

with Alison Allan

#### Little Dewchurch Village Hall

(3 miles from the A49,  
between Hereford and Ross)

Mondays (am) and Wednesdays (pm)

Telephone: 01432 840491

Email: [alisonpilates2016@gmail.com](mailto:alisonpilates2016@gmail.com)



STOTT PILATES  
merrithew CORPORATION

# AQUASSIST

## LIQUID WASTE SOLUTIONS

85 Aylestone Hill, Hereford. HR1 1HX

# septic tank emptying

## treatment plants pumps

# 0191 441888

reliable service & advice

[WWW.AQUASSIST.CO.UK](http://WWW.AQUASSIST.CO.UK)  
the solution is clear

#### Little Birch Gardening Club

Meets on a regular basis at Little  
Birch Village Hall

For further information contact

Lesley Chapman - 01981 541370/  
07834771838



Linedance classes in MBCH on Wednesday  
evenings. 7.30pm-9.30pm...£4.00 Not  
suitable for absolute beginners

Contact Jean Harris  
on 07506718907  
for further details



#### LONGTOWN HISTORICAL SOCIETY MONDAY APRIL 2.

At 7.30pm in Longtown Village Hall,  
there will be a talk by Mr William Gibbs  
on "Antiquarians and Artists of the Llan-  
thony Valley". Membership for last four  
talks £5, Guests £3 per meeting.





## Murphy's Paw

The home of happy woofers!

Doggie Daycare

One to One Grooming

Home Boarding



Tump Lane, Much Birch

Tel: Tricia 07732 286069

FB: Murphy's Paw

Doggie Services

[murphypaw2005@gmail.com](mailto:murphypaw2005@gmail.com)

[www.murphypaw.co.uk](http://www.murphypaw.co.uk)

*Providing a true "home from home" environment.*

*We welcome friends, old and new!*



## THE AXE & CLEAVER

Much Birch, Hereford, Herefordshire. HR2 8HU

Tel No: 01981 540203

Proprietors Andy & Sue Hoare

### WEEKLY SPECIALS

MONDAY – FRIDAY LUNCHTIME SPECIAL

**TWO COURSES**

**£9.95**

~~~~~

WEDNESDAY

**SENIOR CITIZENS' LUNCH**

**TWO COURSES**

**£6.95**

~~~~~

SUNDAY LUNCH

**TWO COURSES**

**CHOICE OF THREE ROASTS**

+

**CHOICE OF DESSERTS**

**£12.95**

BOOKING ADVISABLE

## KILPECK EVENTS:

**SPRING FAMILY QUIZ**

**SATURDAY 24<sup>TH</sup> MARCH**

**KILPECK VILLAGE HALL**

**7.30 – doors open 7pm**

**BRING YOUR OWN PICNIC**

**Beer, cider & soft drinks to purchase**

**Teams of 4 - £10**

**CASH PRIZE FOR WINNING TEAM**

Our **ART CLUB** has been running in a beautiful setting in Kilpeck for over thirty years.

We meet in the Kilpeck Village Hall on Monday afternoons from 2-4 pm and each year we have an autumn and spring/summer session.

We are always pleased to see new members. We don't have formal tuition but help and encourage each other. Please come along for a free taster session. We will be holding our biennial exhibition and sale in September.

**This year our first meeting is on 12 February, and will continue until the early summer.**

**For more information contact**

**[jen64davies@gmail.com](mailto:jen64davies@gmail.com)**

\*\*\*\*\*

## CRAFTS@KILPECK

### FAYRE

**SATURDAY 21<sup>ST</sup> APRIL**

**KILPECK VILLAGE HALL**

**(HR2 9DW)**

**10.30 – 2.00pm**

Tables available: [bethkvh@sky.com](mailto:bethkvh@sky.com)

*Crafts, gifts, refreshments and a warm welcome!*

\*\*\*\*\*

### SITTING & STANDING GENTLE EXERCISE

Low impact, aerobic class for all ages, mobility, strength and tone.

**ZOE HOOPER (ETM Level 2) - #07870397352**

**KILPECK VILLAGE HALL**

**TUESDAYS 10.45 – 11.45 (£5)**

## BRENDAN MORRIS

**CONSTRUCTION & CARPENTRY**

**SPECIALISING IN uPVC**

**WINDOWS, DOORS &**

**CONSERVATORIES**

call now for a free quotation

on; **07855760912**

email

**[brendanmorris05@gmail.com](mailto:brendanmorris05@gmail.com)**

# Great Local Food & Drink in Much Birch

All Day Every Day



PILGRIM  
HOTEL



VALLEY  
RESTAURANT

**Serving Great Local Food & Drink**

**Breakfast \* Morning Coffee \* Lunch**

**Afternoon Tea \* Dinner \* Celebration Meals**

**Conferences \* Private Dining \* Murder Mystery Dinners**

**Menus on website [www.pilgrimhotel.co.uk](http://www.pilgrimhotel.co.uk)**

**Booking is recommended - 01981 540742**

## POLISHED NAIL & BEAUTY LOUNGE

*'Where friends and beauty meet....'*



A GIRL SHOULD BE TWO THINGS..  
*Classy & Fabulous*  
- COCO CHANEL

- \* OPI MANICURES \* PEDICURES \* GEL POLISH \* SCULPTURED ACRYLIC/GEL NAIL EXTENSIONS
- \* BEACH/HOLLYWOOD TOES \* SIGNATURE EYEBROWS – SCULPT, COLOUR AND CORRECT
- \* THREADING \* WAXING \* SEMI PERMANENT EYE LASHES

**REGULAR AESTHETIC CLINICS WITH Dr Sarah Parkes**

GENTLEMANS LOUNGE HELD EVERY TUESDAY AFTERNOON FROM 2-5PM

*'The Wood Shed'*

**PENGETHLEY GARDEN CENTRE, Peterstow, Ross on Wye, HR96LL**

Email: [Polished.jacqueline@gmail.com](mailto:Polished.jacqueline@gmail.com)



**Polished-Nail And Beauty**

**01989 730791 or 07759131783**

**OPEN: TUESDAY – SATURDAY 9am-5pm. Complimentary Tea and Coffee**



*The Singing Tree* is an informal fun singing group that started its life in Much Dewchurch, moved with us to Garway and we are now meeting in Kingsthorne since our move here in July last year. No auditions, no need to read music, just come along and enjoy yourself. We meet on Wednesdays at 7.30 pm at Wynds Poynt. For more information please contact Hilary on 01981 540022 the [turning@phonecoop.coop](mailto:turning@phonecoop.coop)



## Yoga

In Much Dewchurch and Steiner Academy

Mondays 6.00—7.15



- ⇒ Tension and stiffness?
- ⇒ Back ache, backache, general aches and pains?
- ⇒ Difficulty sleeping?

Learn how to relax and let go. Discover how you can move more freely and improve your posture. A practical approach to yoga that is adaptable to anyone regardless of age or physical condition. All welcome

- ◆ Small group Classes
- ◆ Individual attention

## Aconbury Shepherd Huts



**Our huts are hand built to the highest of standards. Our standard hut includes insulation, double glazing, electrics and decoration.**

**Uses include craft room, play house, sleep over's etc.**

**Come and see our display hut or request our new brochure**

**We also build stables, field shelters, garden sheds, play houses, garden features and bespoke gates. Please ring for our dedicated brochure**

**Stephen Turner. The Underhills, Hollybush Lane, Much Birch, Herefordshire. HR2 8HX.**

**Telephone: Office 01981 540090  
Mobile 07768 206296**

**[www.aconburyshepherdhuts.co.uk](http://www.aconburyshepherdhuts.co.uk)  
[turnersofcrossways@btinternet.com](mailto:turnersofcrossways@btinternet.com)**



**DEAN & SUN**  
Solar Electric Installation

Offering a full range of electrical services and now specialising in the installation and maintenance of PV solar panels to generate electric for households and small businesses.

Please contact us for a free, no obligation site survey and quotation or to discuss your requirements in more detail. We aren't salesmen, we aren't working for anyone else, we aren't a regional office...

We are a Hereford based family run business who will offer the perfect balance of service, value and affordability to new and existing customers.

Please see our website for full details and updates on the changes to the Feed In Tariff or email us at [info@deanandsun.co.uk](mailto:info@deanandsun.co.uk) to receive our quarterly newsletter.

Tel: 01981 540030  
Mobile: 07818 847986  
Email: [info@deanandsun.co.uk](mailto:info@deanandsun.co.uk)  
[www.deanandsun.co.uk](http://www.deanandsun.co.uk)

FOR FUTURE GENERATIONS

REACT



## Self-storage Herefordshire

£15 per week—no VAT  
20ft x 8ft

7 Days a week access  
Long or short term rental.

## Seasoned Firewood for Sale

**George Cole**

**Mob: 07800952317**

**Tel: 01981241274**

**Email: [coleg600@gmail.com](mailto:coleg600@gmail.com)**

## About Us

Carrot&Wine Stores is brand new to the Hereford area.

Our family run company aims to offer all the convenience and family friendly service of a local store with the added benefit of locally sourced produce.

We stock local groceries, meats and cheese to local award winning cider, wine and all the daily essentials such as bread, milk, eggs and newspapers.

Open 7 days from 7am to 9pm  
Find us at Wormelow on the A466!

(Postcode for Sat Nav: HR2 8EJ)

Phone 01981 540126

CARROT&WINE  
STORES  
—•—  
★  
WORMELOW

### Parish Walk

All welcome on another Parish Walk

**Little Birch Parish Boundary Walk 5.9 miles** - a route following closely to the boundary footpaths of Little Birch linking in with the seasonal tradition of Beating the Bounds.

Meeting at Little Birch Village Hall at **1.45pm**

on **Sunday 22 April**

Angela Middleton 01981 540377 -

Voluntary Footpath Officer



## KILPECK ART CLUB SPRING SEASON 2018

Our group meets in the Kilpeck Village Hall on Monday afternoons from 2-4 pm. Our first meeting this year is on 12 February and we continue until mid June.. We are always pleased to see new members, so please come along for a free taster session. For more information, contact

Jenny by e-mail at [jen64davies@gmail.com](mailto:jen64davies@gmail.com)

**ROSS SCIENCE SOCIETY:** The April Meeting will be held on Wednesday 4th April 7.00 for 7.30 p.m. at the Castle Lodge Hotel, Wilton (just off the Wilton Roundabout) with Speaker Mark Singleton telling us about his research into '**A Structural Alternative to Timber and Steel in Building Construction**'. All are welcome. Entry: £4.00 p.p. or £16.00 annual subscription. Students free. Extra Parking is available opposite the Hotel carpark. For further details see the website: [www.rosssciencesociety.org.uk](http://www.rosssciencesociety.org.uk) or ring the Secretary on 01989 720539

**ROSS CIVIC SOCIETY:** The next illustrated Talk will be held on Wednesday 11th April 7.00 for 7.30 p.m. at the Larruperz Community Centre, Ross. The topic will be '**Local 19th and early 20th century Photographs of William Call**' with the Speaker Pat Millington. Entry £5.00 for visitors free for Members. Subscriptions £15.00 p.a. individual joint £25.00. All are welcome. For further details ring the Secretary on 01989 562424

**ROSS ARTS APPRECIATION SOCIETY:** The illustrated Talk on Friday 6th April will follow the AGM which starts at 7.00 p.m. This will be held in the Watkins Room, Larruperz Centre, Ross. The Talk which follows at 7.30 p.m. will be '**In Appreciation of Gardens**' with plantswoman Tamsin Westhope from Stockton Bury Gardens the Speaker. All are welcome. Entry for Guests £4.50, for Members £2.50 Annual subscription £10. p.a. For further details ring the Chair on 01989 720539



## HOLLYBUSH HIRE

*Vintage Tea Set Hire*

*Woodfield, Hollybush Lane, Much Birch, HR2 8HX*

*07989 854593 / 01981 541109*

*[emmadeer@hotmail.co.uk](mailto:emmadeer@hotmail.co.uk)*

*Tea Cups, Saucers & Tea Plates*

*Sandwich / Cake Plates*

*Teapots, Sugar Bowls & Milk Jugs*

*Cake Stands*

*Lanterns, Mirrors*

## R&R FIREWOOD

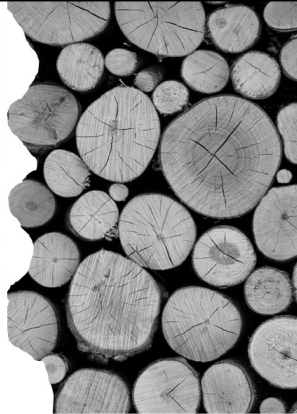
*Well seasoned hardwood*

*Cut to any size*

*Delivered to your door*

**STEPHEN or TARA**

**Tel: 01432 870282**



## W.M. PARTINGTON

### GENERAL BUILDER

- MINI-DIGGER & EXCAVATOR HIRE

RENOVATIONS  
BARN  
CONVERSIONS  
NEW BUILD  
EXTENSIONS

ROOFING  
CONCRETING  
PLASTERING  
GROUNDWORK

UPVC WINDOWS  
AND DOORS  
BRICKWORK  
STONEMASONRY

**RING FOR A QUOTATION**

**MUCH BIRCH**  
**07774 805369 / 01981 541109**



**THE CASTLE INN @ LITTLE BIRCH**

## OPENING TIMES



Mon & Tues: closed

Wed: 6pm - 11pm

Thurs: 6pm -11pm

Fri: 6- 11pm

Sat: 12pm- 3pm. 6pm-12pm

Sun: 12pm- 6pm

Seb and Emma welcome you to the Castle Inn for home cooked food, real ale and friendly atmosphere!

New pub number; 01981540943

*Call for any information and bookings!*

**CUSTOMER**  
**SUPPLIER**  
**SALES**  
**RECEIPTS**  
**PURCHASES**  
**BOOKKEEPING**  
**JOURNALS**  
**RECORDING**  
**INCOME**  
**SYSTEM**  
**TRANSACTION**  
**LEDGER**  
**DAYBOOK**  
**GENERAL**

### EJ PARTINGTON BOOKKEEPING

Bookkeeping & Accounting Specialist

Woodfield, Hollybush Lane, Much Birch, HR2 8HX

**07989 854593 / 01981 541109**

[emmadeer@hotmail.co.uk](mailto:emmadeer@hotmail.co.uk)

Bookkeeping	VAT Returns
Invoicing	Management Accounts
Payroll	Self-Assessment Returns

Emma Partington has over 10 years experience in the finance industry both in practice and in industry, a local business that is able to help with all your bookkeeping needs.

**Call or e-mail today for a no obligation discussion about your requirements.**



# healthyfeet

## Mobile Foot Clinic

Sophie is an experienced and qualified Foot Health Practitioner, a Registered Member of the British Association of Foot Health Professionals and is DBS Police Checked



- Nail Trimming
- Thickened Nails
- Corns
- Callus (hard skin)
- Cracked Heels
- Verrucas
- Fungal Nails & Infections
- Ingrown Toenails
- Diabetic Foot Care



Sophie Limming Dip FH MCFHP MAFHP  
Qualified & Registered Foot Health Practitioner

**Tel 0749 309 2960**

sophie@healthyfeetclinic.co.uk www.healthyfeetclinic.co.uk

## Jargon-free Computer Help



## Computer Tuition, Technical Support and Buying Advice.

Local, friendly help with  
no jargon and  
reasonable rates

**Ben Roberts**  
**01981 540100**  
**07702 760789**

## décor solutions

Tim Jones  
Painter and Decorator



Kings Thom, Herefordshire, HR2 8AW  
Tel: 01981 540242 Mob: 07810 895355  
[tjsj@me.com](mailto:tjsj@me.com)

Three generations of experience specialising in Painting and Decorating services.  
General property maintenance duties carried out.  
Fully insured. Good competitive rates.  
A high standard of workmanship and customer satisfaction guaranteed.

## WYE BATHROOMS



Local family run company. Design & installation of  
Bathrooms & shower rooms

We are also registered with NIC-EIC for all your Electrical  
work

Call Paul for a free quotation

Or visit

[www.wyebathrooms.co.uk](http://www.wyebathrooms.co.uk)

01989-563558

07894-563897



## EMMA BRADBURY EQUINE

Mobile horse clipping services  
Horse sitting / Holiday Cover  
Or just an extra pair of hands!

**25 years experience with horses**  
**Fantastic references available**

01981 541385 : 07725 536648

01981 541385 : 07970 346460

18 year old babysitter available weekdays/  
weekends. £6 an hour. Ring 07909 940916 for more  
details.

Cecily Daffern

**CROSSROADS CARE**  
Forest of Dean & Herefordshire

**Crossroads Care are a specialist charity working to help and support unpaid carers**

If you are caring for a family member, friend or neighbour, our Health and Wellbeing Service may be able to assist you. We offer a range of services including:

**Home visits and support planning**

Our support workers can arrange home visits to discuss carers needs and carry out in-depth support planning, tailored to individual circumstances

**Gents Pub Club and Ladies Lunch Club**

Regular groups aimed at those being cared for who, due to ill health or disability, may have difficulties getting out to socialise. We provide door to door transport and have qualified support staff on hand

**Community events**

Monthly trips out across Herefordshire for Carers and those they care for. With our qualified support staff on hand to ease the caring role, our trips are the perfect chance to get out and about and meet new people

Call us on 01432 355373  
www.crossroadshereford.org.uk  
info@crossroadshereford.org.uk  
Fred Bulmer Centre, Wall Street, Hereford, HR4 9HP  
Registered Charity Number: 1086841

 carerstrust  
a Network Partner

**BAYLEY'S WINDOW CLEANING SERVICE**

WATER FED POLE AND TRADITIONAL

WE ALSO CLEAN:-

⇒ **GUTTERS AND FACIAS**

⇒ **CONSERVATORY ROOFS**

***FREE QUOTATIONS***

\* REFERENCES CAN BE GIVEN \*

\* ESTABLISHED IN AREA \*

PHONE ANDREW  
HOME: 01432 508979  
MOBILE: 07771 870891  
EMail: bayleyscleaning@gmail.com

## Little Birch Parish Council

Your Little Birch Parish Council Councillors are:-

Cllr Ben Roberts	Chairman	01981 540100	b3nroberts@gmail.com
Cllr Elaine Godding	Vice Chair	01981 540607	ecgoddling@hotmail.co.uk
Cllr Steve Naylor		01981 541323	steve.naylor5@btinternet.com
Cllr Mike Morley		01981 541027	morley04@globalnet.co.uk
Cllr Annette Wissler		Contact through the clerk	
Angela Middleton	Volunteer Foot Paths Officer	01981 540377	ajbmiddleton@hotmail.co.uk
Sophie Glover	PC Clerk	01432 270499	littlebirchpcclerk@hotmail.co.uk

Meeting agendas are posted on the Parish notice board at least three days in advance and are also on our web site [www.littlebirchparishcouncil.org](http://www.littlebirchparishcouncil.org)

Every one is welcome to attend Parish Council meetings, and if you have a particular question that you would like to put to him, please can you let the clerk know before the meeting? Mrs Sophie Glover, Little Birch Parish Clerk, The Orchard, Ridgehill, Hereford HR2 8AG

## Little Birch Parish Facebook Group



Find the latest news, events and business listings all in one place.

You are welcome to promote your local business, advertise a local event or post news or information of interest to the village and surrounding area.

Search for *Little Birch Parish Group* on Facebook

16th March 2018

**PARISH MEETING** – at the Parish Council Meeting held on the 8<sup>th</sup> March 2018 at the Much Birch Community Hall.

Those present heard about local concerns around parking and school traffic amongst other issues. There was also consideration of one new planning application and the Parish Council submitted their comments on this to the Planning Authority.

The Neighbourhood Plan was progressing following the collation of information received in the completed questionnaires.

Future Dates for Neighbourhood Plan Steering Group Meetings are: 29th March, 26th April and the 31st May 2018. Start time for all meetings is 7.30 in the Much Birch Community Hall. All are very welcome.

The Much Birch Parish Council Meeting dates for 2018 are as follows: April 5<sup>th</sup>, May 3<sup>rd</sup>, June 7<sup>th</sup>, July 5<sup>th</sup>, no meeting in August, then September 6<sup>th</sup>, October 4<sup>th</sup>, November 8<sup>th</sup> and December 6<sup>th</sup>.

The next meeting of the Parish Council will be held on **Thursday 5th April 2018 from 7.30pm** - at The Much Birch Community Hall.

Please see notice boards and website for agendas. As always the public and press are more than welcome to attend and will have the opportunity to speak directly to their representatives.

A reminder that:-

**Your Much Birch Parish Councillors are:-**

**Cllr Alison Cook** (Chair) Jasmine Cottage, Wrigglebrook Lane, Kingsthorpe, Hereford, HR2 8AW, e mail [thecooks@wyenet.co.uk](mailto:thecooks@wyenet.co.uk) Tel. 01981 540703

**Cllr Steve Turner** (Vice Chair) The Underhills, Hollybush Lane, Much Birch, Hereford, HR2 8HX, e mail [turnersofcrossways@btinternet.com](mailto:turnersofcrossways@btinternet.com) and Tel. 01981 540090

**Cllr Andrew Crum** Anfield House, Barrack Hill, Kingsthorpe, Hereford, HR2 8AX, e mail [a.crum@btinternet.com](mailto:a.crum@btinternet.com) Tel. 01981 540002

**Cllr Tim Jones** Swiss Cottage, Wrigglebrook, Kingsthorpe, Hereford, HR2 8AW e mail [tjsj@me.com](mailto:tjsj@me.com) Tel. 01981 540242

**Cllr Roisin Burge** The Old Hall, Barrack Hill, Little Birch, Herefordshire, HR2 8AX [roisinburge@hotmail.com](mailto:roisinburge@hotmail.com) Tel. 01981 540724

**Cllr David Baldwin** The Granary, Much Birch, Herefordshire, HR2 8HS [baldwin79@btinternet.com](mailto:baldwin79@btinternet.com) Tel. 01981 541198

Full minutes of the meetings and information etc. can be found on the Parish Council website following the link found in this summary. [www.muchbirchparish.org.uk](http://www.muchbirchparish.org.uk).

You can also find us on Twitter at <https://twitter.com/MuchBirchPC> and Facebook at <https://www.facebook.com/groups/Much.Birch.Parish>

---

## South Hereford Rural Safer Neighbourhood Team (SNT)

### Get in touch

**101** to talk to your local SNT or report a crime  
[herefordsouthside.snt@westmercia.pnn.police.uk](mailto:herefordsouthside.snt@westmercia.pnn.police.uk)  
[www.westmercia.police.uk](http://www.westmercia.police.uk)

**Herefordshire Cops** / @southsidecops

Only call 999 in an emergency, when a crime is in progress or life is in danger.

**For daily updates on incidents in your area register for our Dotmailer service via [www.westmercia.police.uk](http://www.westmercia.police.uk).**

Please be aware of the below scam, in which an elderly widow was cheated out of £8,000. Please inform any vulnerable family members, neighbours etc. This scam has been going on for some time, and has happened all over the country.

This is the report from the officer attending

The 90 year old lady lives alone in Kingstone.

At about 11am on Thursday 22nd February she was called out the blue on her landline by "DC SMITH" from Hammersmith Police Station giving shoulder number EK265.

He stated he had people in custody, that he was doing checks into fraudulent activity at local banks. The lady asked how she could check he was genuine and has said to call him back on 161 which she did (but without clearing the line first).

She then spoke to another male who confirmed DC SMITH was genuine and transferred the call back to him. He asked the lady to keep the line open, checked she had no mobile and no one was due to visit.

He established she had accounts with LLOYDS and HALIFAX.



He told her to withdraw cash from both because staff were corrupt so police needed the banknotes to be able to check for fingerprints. The lady agreed to get £5500 out of LLOYDS and £2500 out of HALIFAX.

As briefed by DC SMITH she told the bank the money was for her daughter and that the police had not asked her to get it. She returned home around 4pm.

DC SMITH was still on the open phone line and he asked her to read the bank note numbers for 10 notes from HALIFAX, and another 10 notes from LLOYDS. An hour later DC SMITH was back on the phone stating 2 notes from HALIFAX and 6 notes from LLOYDS were fake so he would send a plain clothes officer to collect the money. He said the password was "Disruptive" and the officer would know this, so the lady could be sure she was handing the package to the right person.

At about 7.30pm the lady answered her front door and there was an Asian male there.

The lady asked if he was there for the package and he confirmed this, and then gave her the password so she gave him the package containing £8000. Throughout this the lady was still on the phone to DC SMITH (this line having been open since 11am).

DC SMITH stated he would call back before 1200 hrs on 23.2.18 to update her. Instead the lady told a neighbour who happened to attend the bungalow and she told the lady's daughter, and police were called.

Kind regards  
**Lowri Anderson**  
PCSO 40247

Hereford City Southside and Rural SNT  
West Mercia Police

